



21 Crestview Avenue Kellyville, NSW

4  2  2 

Updated Large Family Home

This bright and spacious family home, located in a sought after area, has just been updated and perfect for the growing family.

Price: \$850 per week

Bond: \$3,400

Available Date: 12/12/2023



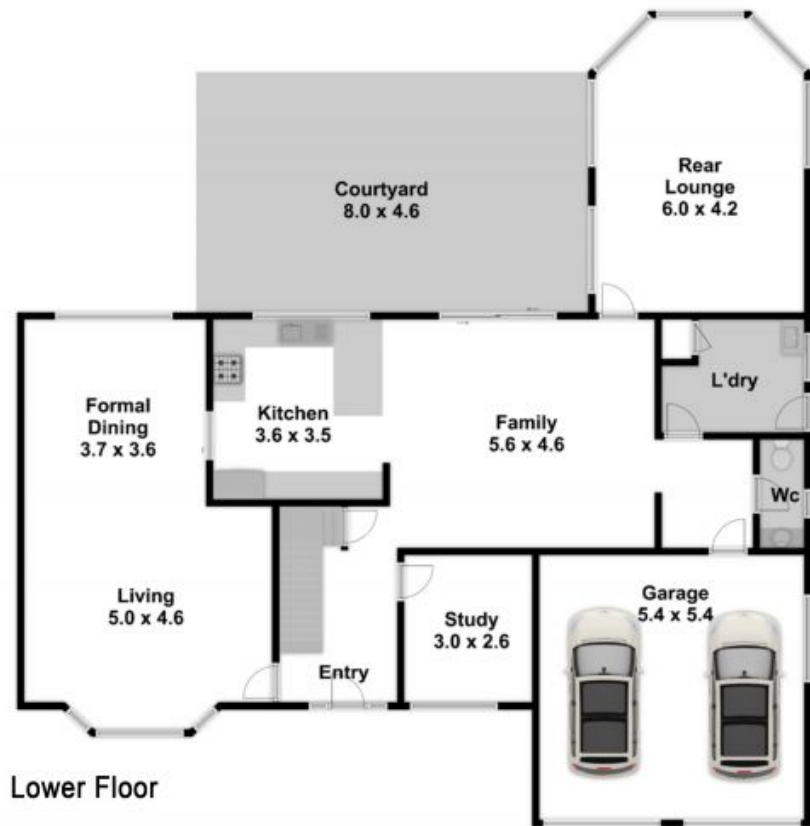
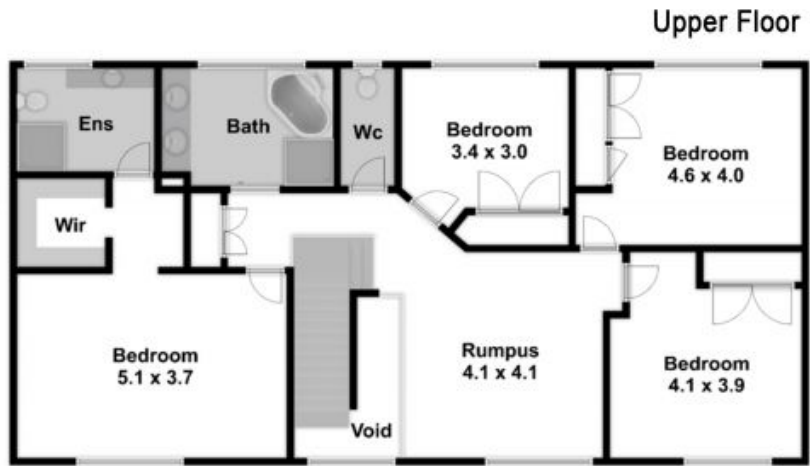
Ashleigh Gray

02 8893 2222

21 Crestview Avenue, Kellyville



Please note:
Floorplan measurements are a guide only.
All dimensions are approximate in their distance and volume.



- 4
- 2
- 2