

STONE



18/5-13 Virginia Street Rosehill, NSW



Spacious 2 Bedroom Apartment in Convenient Location

This thoughtfully crafted two-bedroom apartment is situated in a quiet street, offering a perfect blend of sophistication and convenience. It is close to public transportation, local schools, shops, restaurants, parks, and the Rosehill Gardens Racecourse. The apartment provides easy access to the M4 and is only an 8-minute drive from Parramatta CBD. Conveniently located next to Rosehill Public School and Rosehill Gardens, it is also near the future plans for a light rail.

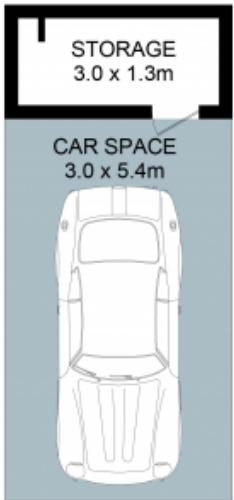
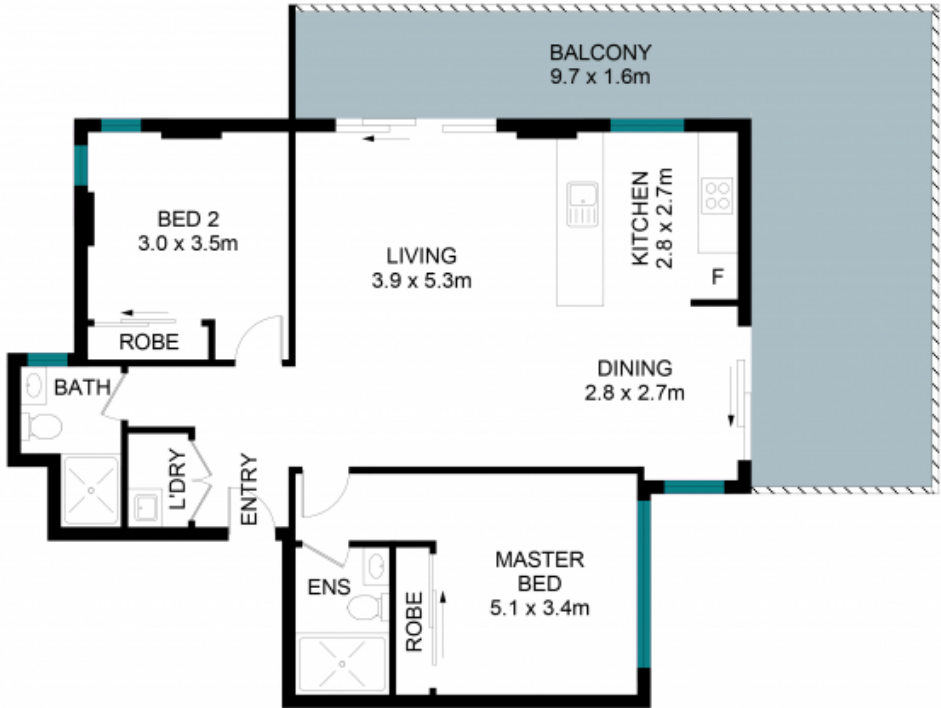
Price: \$670 per week

Available Date: 29/01/2024

Stone Beecroft | Castle

02 8866 1500

Hill | Epping



The floor plan is not to scale; measurements are indicative and in metres. Exterior elements are not in position. Plans should not be relied on. Interested parties should make and rely on their own enquiries.



18/5-13 Virginia Street, Rosehill

Land Area Approx. - 0 sqm

