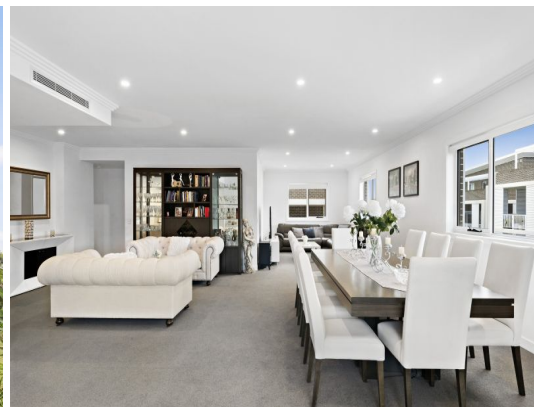


STONE



62/23 Regent Honeyeater Grove North Kellyville, NSW



Luxury living

Oversized executive style residence has premium finishes & is superbly positioned on the 3rd level of the most desirable complex. A large & versatile floor plan 142sqm plus balcony overlooking parkland reserve. Spacious living areas plus media zone and separate study!

Price: \$680 Per Week

Bond: \$2,720

Available Date: 15/03/2024



Ashleigh Gray

02 8893 2222

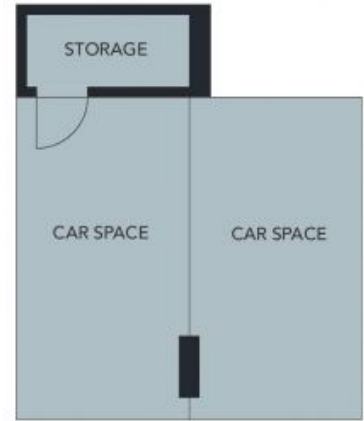


Christie Irwin

02 8893 2221



GROUND FLOOR



BASEMENT



Produced by DIAKRIT



GROUND FLOOR



BASEMENT