



8/9 Stonelea Court Dural, NSW



A deserving lifestyle

The most affordable living in The Hills. Looking to downsize? Then look no further?.Spacious ground floor, Strata Title unit enjoys a quiet position adjacent to the residence-only car park within the ultra-convenient 'Mountainview' Retreat, a sought-after over 55 retirement village at Round Corner Dural. Convenience is an understatement being approx. 100m to local bus transport and approx. 350m to Shops, eateries, medical facilities, and essential amenities (closer via a walkway).

Price: \$505,000
Council Rates: \$280.00 p/q
Water Rates: \$171.41 p/q
Strata Rates: \$636.55 p/q



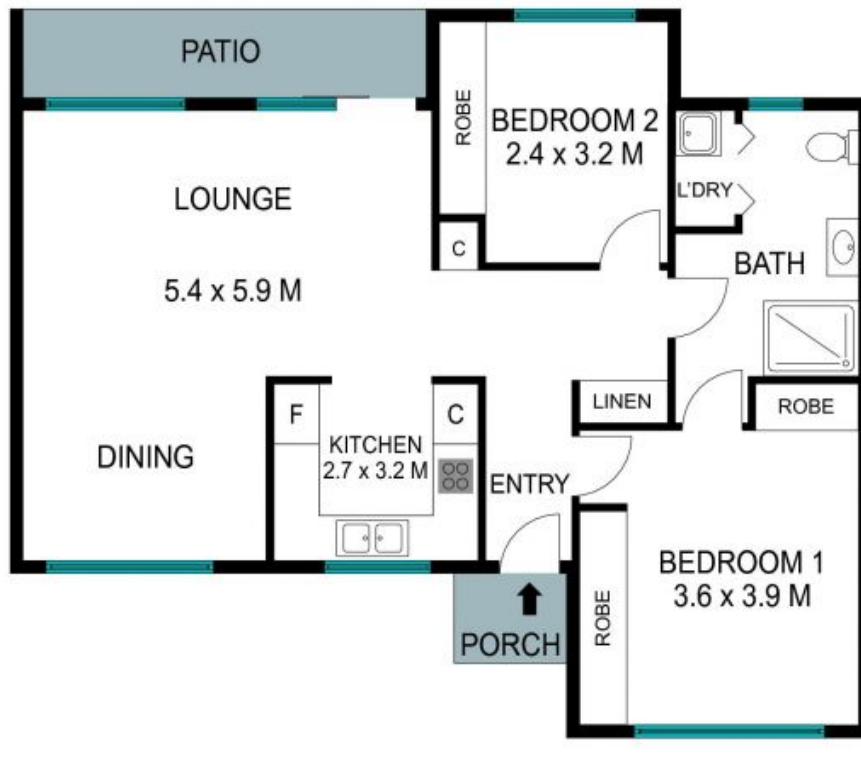
Viviane Mylott

0438 983 615



Jane Booty

0412 207 452



The site plan and floor plan are not to scale; measurements are indicative and in metres. Bushes and trees are placed for illustration purposes. Plans should not be relied on. Interested parties should make and rely on their own enquiries. All other information provided has been collected from reliable sources but cannot be guaranteed for accuracy.