

14/24-32 Edensor Street Epping, NSW

3 2 1

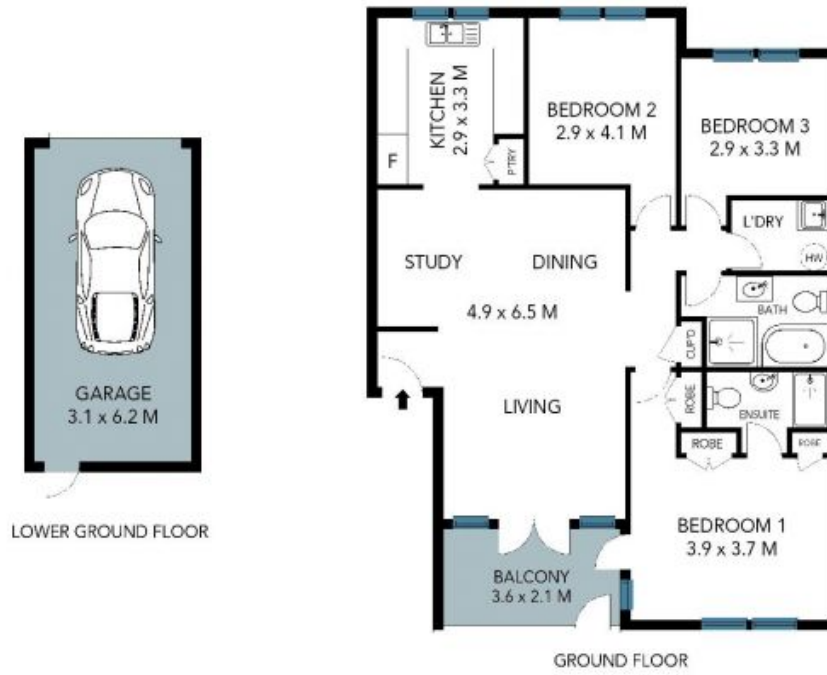
Renovated stylish apartment, steps to Epping

Set on the ground floor of an ultra-convenient complex with a lush outlook, this beautifully updated three-bedroom apartment showcases fresh upgrades and high-quality finishes. The pinnacle of convenient, carefree living, it's just a short stroll to Epping station and dining precinct and is zoned for Epping Heights Public, Cheltenham Girls, Epping Boys and Carlingford High.

Price: Contact Agent
Council Rates: \$279.36 p/q
Water Rates: \$179.90 p/q
Strata Rates: \$1,106.84 p/q

Stone Beecroft | Castle

02 8866 1500
Hill | Epping



The site plan and floor plan are not to scale; measurements are indicative and in metres. Bushes and trees are placed for illustration purposes. Plans should not be relied on. Interested parties should make and rely on their own enquiries. All other information provided has been collected from reliable sources but cannot be guaranteed for accuracy.