

STONE



52/23 Taranto Road Marsfield, NSW



Privacy and Convenience

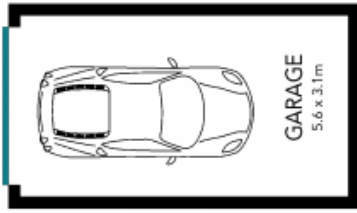
Set on a premier Marsfield street, this generous full brick townhome offers a relaxed lifestyle with surrounding conveniences. A lush leafy position tucked away from the road grants it the peace and privacy of a serene retreat, while its proximity to Macquarie Park promises a savvy investment. Macquarie University, Metro train station, cafes and city buses are all within minutes of a pleasant stroll.

Price: SOLD
Council Rates: \$336.00 p/q
Water Rates: \$171.00 p/q
Strata Rates: \$978.00 p/q

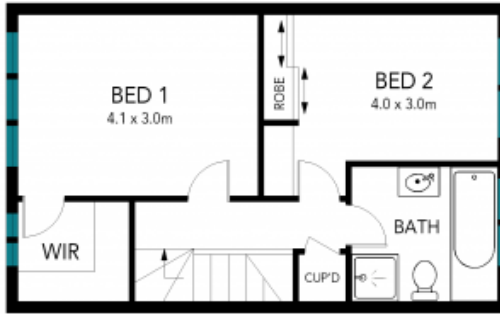


Vincent Goh

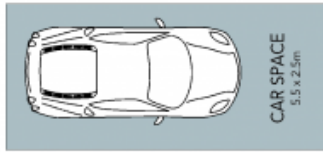
0412 316 797



LOWER GROUND FLOOR



FIRST FLOOR



GROUND FLOOR



GROUND FLOOR



The floor plan is not to scale; measurements are indicative and in metres. Exterior elements are not in position. Plans should not be relied on. Interested parties should make and rely on their own enquiries.

52/23 Taranto Road, Marsfield

