

1/237 Midson Road Epping, NSW

3 1 2 2

### Centralised boutique townhouse in the Cheltenham Girls and Carlingford High catchment

Located in an ultra convenient setting, this cottage-style townhome caters to comfort and easy-care living with a lovely sense of warmth and character. It offers multiple spaces to enjoy and unwind in addition to a secure and low upkeep yard, positioned with a prime Epping address that's Cheltenham Girls, Carlingford High and Roselea Primary zoned - as well as 1.2kms to North Carlingford Village and 2.1kms to Epping station.

**Price:** \$880 per week

**Available Date:** 03/06/2024

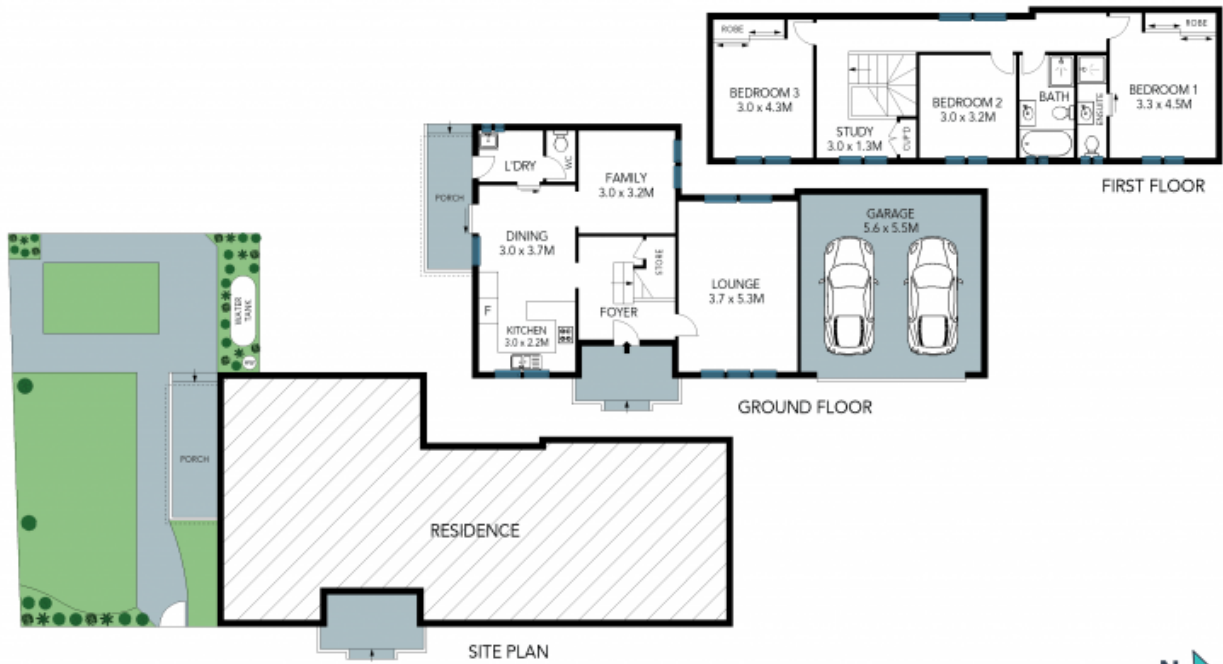


**Daniel Yao**

8893 2245

1/237 Midson Road  
Epping

STONE



The site plan and floor plan are not to scale; measurements are indicative and in metres. Bushes and trees are placed for illustration purposes. Plans should not be relied on. Interested parties should make and rely on their own enquiries. All other information provided has been collected from reliable sources but cannot be guaranteed for accuracy.