



10/5 Chester Street Epping, NSW 3  2  1 

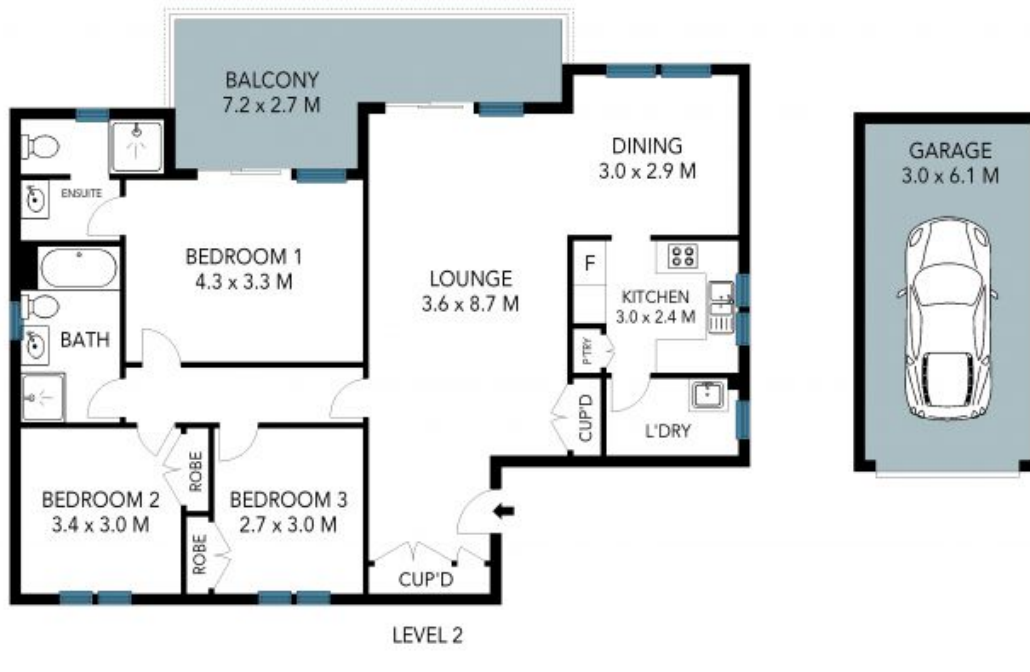
### Spacious and sundrenched, steps from Epping

Available on the market for the first time in 35 years, this second-floor apartment in a boutique complex offers a generous, versatile floorplan bathed in natural light, thanks to its sizeable north-facing balcony. Perfectly positioned within walking distance of Epping's vibrant lifestyle hub, it's zoned for Epping North Public, Cheltenham Girls, Epping Boys, and Carlingford High.

Price: \$985,000

Stone Beecroft | Castle

02 8866 1500  
Hill | Epping



The site plan and floor plan are not to scale; measurements are indicative and in metres. Bushes and trees are placed for illustration purposes. Plans should not be relied on. Interested parties should make and rely on their own enquiries. All other information provided has been collected from reliable sources but cannot be guaranteed for accuracy.