

133/1C Vangelis Street Rouse Hill, NSW

1 [bed icon] 1 [bath icon] 1 [car icon]

Brand new sophisticated one-bedroom apartment

A stylish sanctuary delivering all the hallmarks of lifestyle perfection, this contemporary yet timeless residence of 'Verset' offers aspirational apartment living in a brand new, boutique development. Fusing thoughtful design with quality finishes, it's perfectly located with a walk-to-everything address, steps to Rouse Hill Village Centre, Metro station, buses, and eateries.

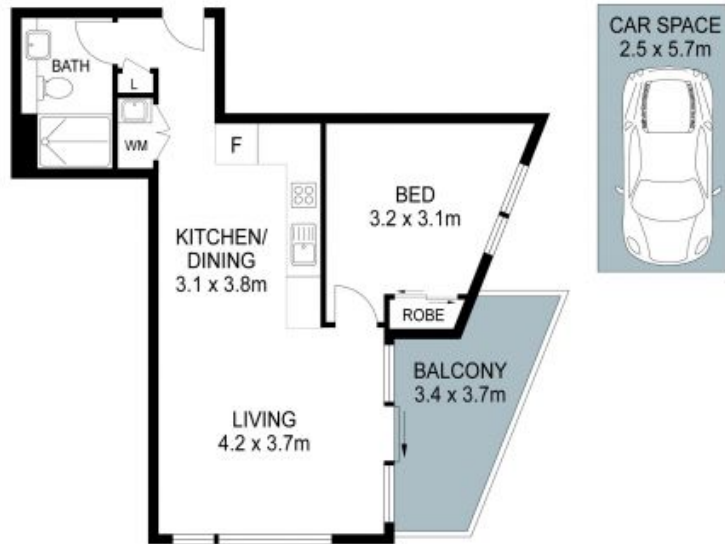
Price: \$550 per week
Bond: \$2,200
Available Date: 12/08/2024

Stone Becroft | Castle

02 8866 1500
Hill | Epping

# 133/1C Vangelis Street, Rouse Hill

1 1 1 50 m<sup>2</sup>



THIS IS AN ARTIST'S IMPRESSION - ALL DIMENSIONS, LAYOUTS AND TREES ARE APPROXIMATE  
ALL INTERESTED PARTIES SHOULD MAKE AND RELY ON THEIR OWN ENQUIRIES

