



G03/30 Cliff Road Epping, NSW

1 1 1

Modern Spacious 1-Bedroom Apartment in Central Location

Discover modern living in this near-new 1-bedroom apartment located in the central Epping area. This stylish residence boasts an array of features designed for comfort, convenience, and sophistication.

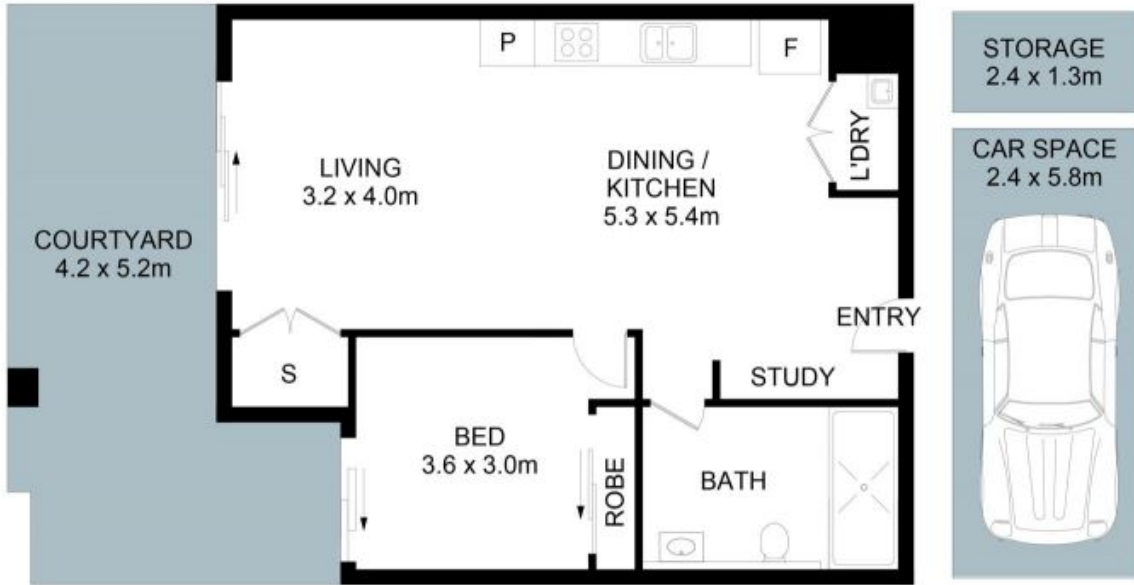
Price: \$660 Per Week

Available Date: 20/01/2025

Stone Beecroft | Castle

02 8866 1500

Hill | Epping



The floor plan is not to scale; measurements are indicative and in metres. Exterior elements are not in position. Plans should not be relied on. Interested parties should make and rely on their own enquiries.



G3/30 Cliff Road, Epping

