



16 Pogson Drive Cherrybrook, NSW

5

3

2

Luxurious haven with space and a scenic outlook

Proudly set with glorious street elevation and leafy views, this truly magnificent home for the growing family captivates with modern interiors, multiple living zones, and generous accommodation. Crafted for effortless living, it offers a sense of escape just approximately 450 meters from city buses and within the coveted catchment for John Purchase Public approx 2.5km and Cherrybrook Technology High approx. 2.8 km.

Price: \$1,300 per week

Available Date: 20/01/2025

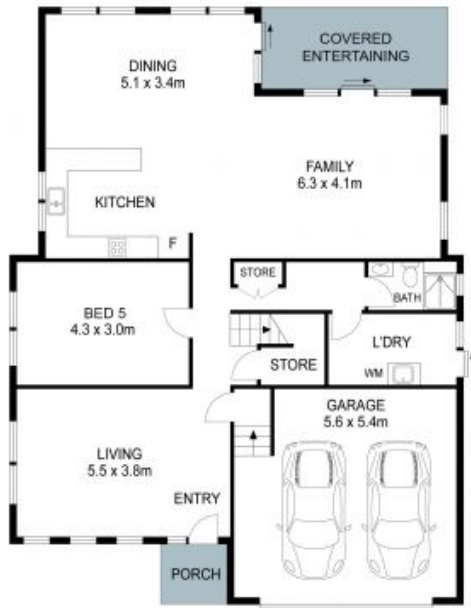
Stone Beecroft | Castle

02 8866 1500

Hill | Epping

16 Pogson Drive, Cherrybrook

5 3 2



GROUND LEVEL



FIRST LEVEL



SITEPLAN

THIS IS AN ARTIST'S IMPRESSION - ALL DIMENSIONS, LAYOUTS AND TREES ARE APPROXIMATE
ALL INTERESTED PARTIES SHOULD MAKE AND RELY ON THEIR OWN ENQUIRIES

