



18/5-13 Virginia Street Rosehill, NSW

2 2 1

### Spacious 2 Bedroom Apartment in Convenient Location

This thoughtfully crafted two-bedroom apartment offers a perfect blend of sophistication and convenience. The apartment is only 2.9 km from Parramatta CBD. Conveniently located next to Rosehill Public School approx 450 meters and Rosehill Gardens approx 1.2 km, and approx. 1.6km to Harris Park Train Station.

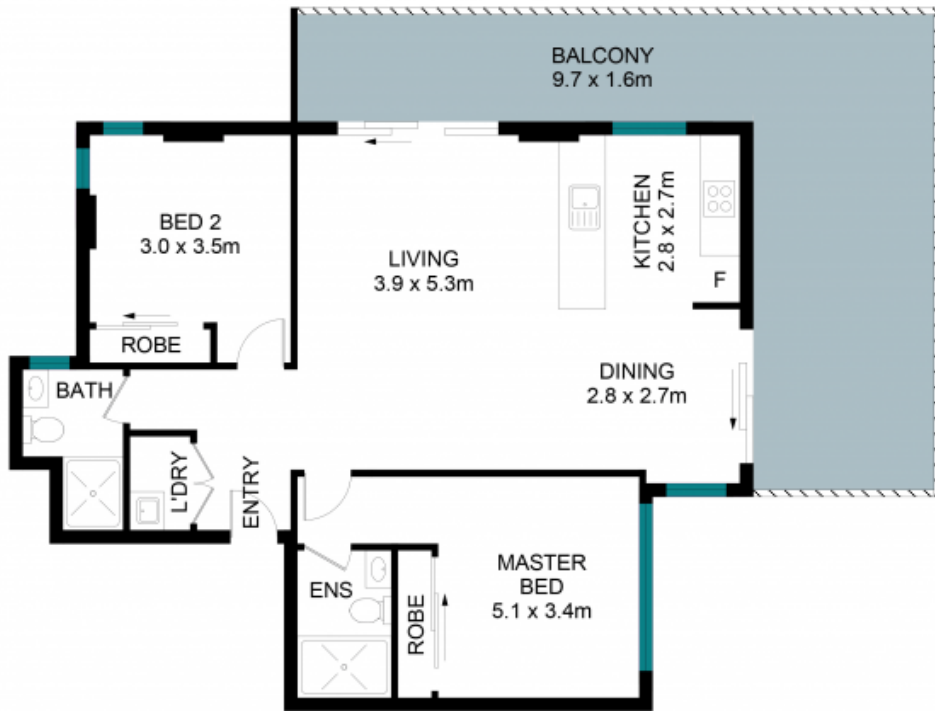
**Price:** \$670 per week

**Available Date:** 07/02/2025

**Stone Beecroft | Castle**

02 8866 1500

**Hill | Epping**



The floor plan is not to scale; measurements are indicative and in metres. Exterior elements are not in position. Plans should not be relied on. Interested parties should make and rely on their own enquiries.

18/5-13 Virginia Street, Rosehill

Land Area Approx. - 0 sqm

