



19 Kenny Close St Helens Park, NSW

4 2 2

### Modern family living in a peaceful cul-de-sac

Perfectly positioned in a peaceful cul-de-sac, this beautifully presented home showcases modern updates, versatile living spaces, and a family-friendly layout. Designed for everyday comfort and effortless entertaining, it offers a seamless blend of indoor and outdoor living. Ideally located close to local shops, schools, Campbelltown Hospital, public transport, and Western Sydney University.

**Price:** \$750 per week

**Bond:** \$3,000

**Available Date:** 29/10/2025

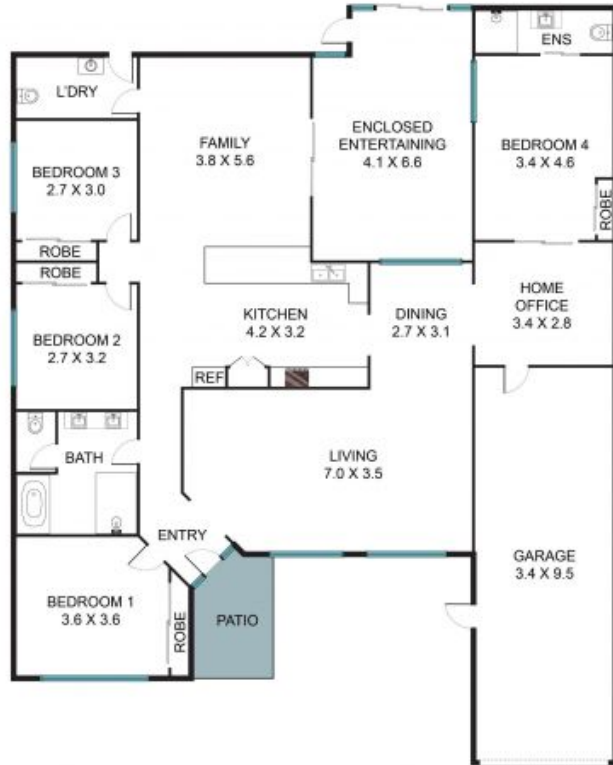


**Leasing Department**

0481064443

**Stone Macarthur**

**STONE**



## 19 Kenny Cl, St Helens Park NSW 2560

The floor plan is not to scale, measurements are in metres. Exterior elements are not in position.  
Plans should not be relied on. Interested parties should make and rely on their own enquiries.  
All other information provided has been collected from reliable sources but cannot be guaranteed for accuracy.