



241 Grono Farm Road Wilberforce, NSW

5

5

5

Riverfront Equestrian Paradise!

A rare and truly exceptional lifestyle and equestrian property, River Ridge Equestrian Park is perfectly suited to professional horse operations or families seeking their dream rural escape.

Price: \$4,900,000



Cathy Walton

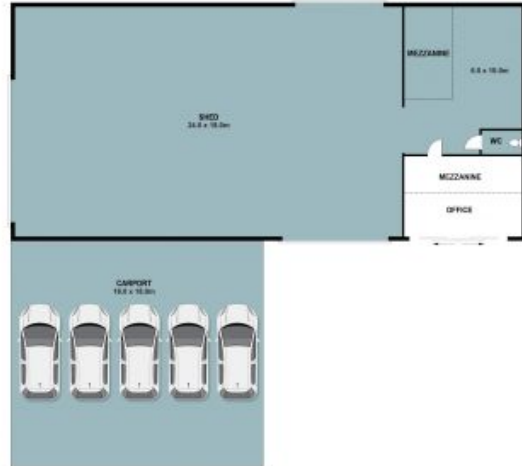
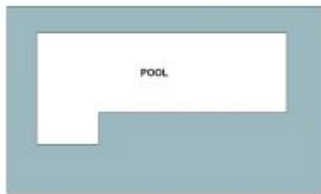
0400 220 355



Briana McDonald

0428 106 432

241 Grono Farm Road,
Wilberforce



The floor plan is not to scale, measurements are indicative and in metres. Exterior elements are not in position. Plans should not be relied on interested parties should make and rely on their own enquiries. All other information provided has been collected from reliable sources but cannot be guaranteed for accuracy.