



7 Lofberg Road West Pymble, NSW

4 

2 

2 

Designer transformation in tranquil family-friendly setting

Price:

SOLD BY SUSAN ASTRIDGE, CHRIS SMITH & JOEY HOOVER



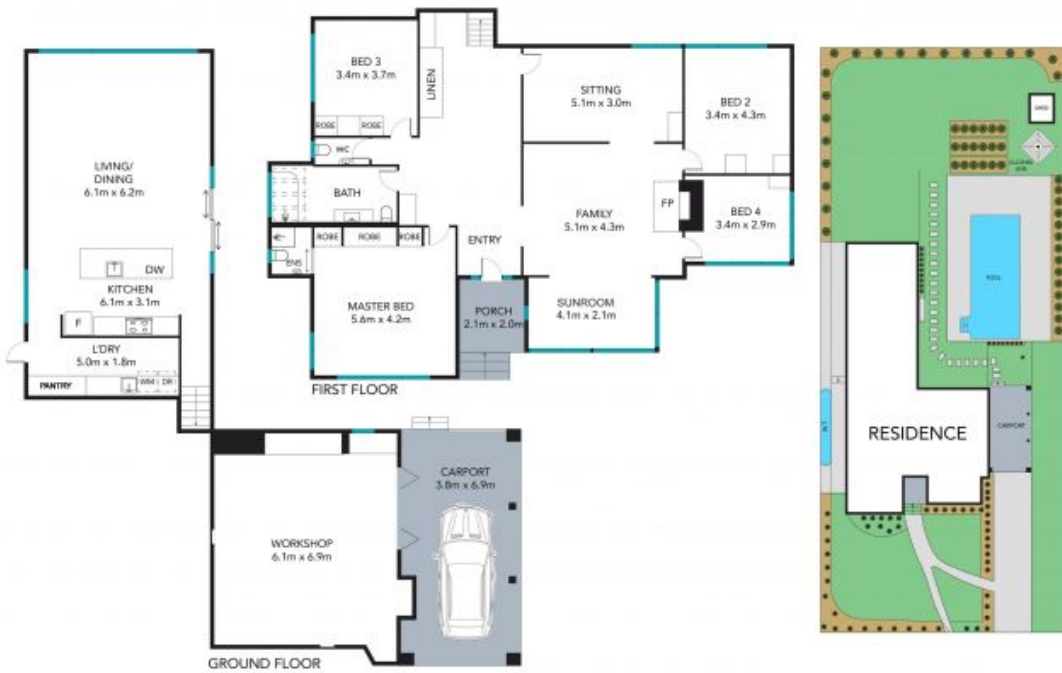
Susan Astridge

0418 104 540



Christopher Smith

0432 369 197



Internal area : 252m²
External area : 33m²
Total area(approx) : 285m²

The site plan and floor plan are not to scale; measurements are indicative and in meters. Bushes and trees are placed for illustration purposes. Plans should not be relied on. Interested parties should make and rely on their own enquire. All other information provided has been collected from reliable sources but cannot be guaranteed for accuracy.