

5 Ray Ellis Crescent Forde, ACT

4

2

2

319 sqm of Grand Family Haven in Forde

From the moment you step inside, this expansive dual-level residence impresses with its generous proportions, multiple living zones, and a layout designed to support every stage of family life. The home delivers an exceptional sense of space, offering dedicated areas for relaxation, entertaining, and quiet retreat. With a spacious ground floor, private upstairs accommodation, and a superb indoor-outdoor connection, this is a home that caters beautifully to modern families seeking comfort, versatility, and room to grow.

Price: SOLD - \$1,430,000



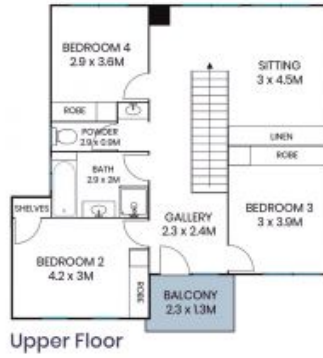
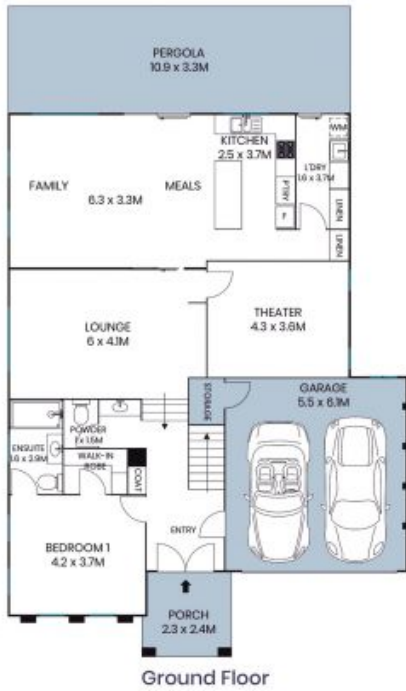
Jess Smith

0410 125 475



Riya Detwani

0431 001 887



The site plan and floor plan are not to scale; measurements are indicative and in metres. Bushes and trees are placed for illustration purposes. Plans should not be relied on. Interested parties should make and rely on their own enquiries. All other information provided has been collected from reliable sources but cannot be guaranteed for accuracy.

5 Ray Ellis Crescent
Forde



Ground Floor



Upper Floor



The floor plan is not to scale; measurements are indicative and in metres. All features included in this 3D plan are for inspiration purposes only. This is not an exact replica of the property or the position of exterior elements. Plans should not be relied on. Interested parties should make and rely on their own enquiries.