



60 Sunningdale Drive Colebee, NSW

4  3  2 

Spacious Family Haven with Stunning Golf Course Outlook

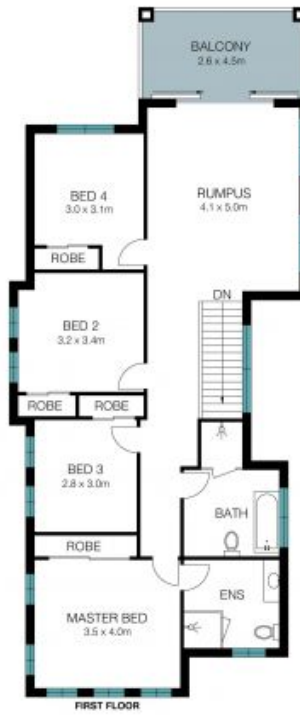
Perched on one of Colebee's highest points, 60 Sunningdale Drive enjoys breathtaking panoramic views across the suburb, golf course, and distant Blue Mountains. This exceptional four-bedroom residence perfectly blends luxury, comfort, and family functionality-crafted for those who love both relaxation and entertaining.

Price: \$1,350,000



Danny Jing

0430 025 586



The floor plan is not to scale, measurements are indicative and in metres. Other elements are not in position. Plans should not be relied on. Interested parties should make and rely on their own enquiries.

60 SUNNINGDALE DRIVE, COLEBEE

