



109 Quarry Road Rosewood, NSW



Dual Living Acreage Sanctuary ? House, Granny Flat & Shed on 1.27ha

A rare blend of elegance, versatility and tranquility, this exceptional 1.27-hectare property is the ultimate small-acreage retreat. Framed by lush, park-like surrounds, it offers a beautifully appointed main residence, a fully self-contained granny flat and an impressive shed, creating the perfect dual-occupancy lifestyle for families, guests or additional income. Every detail evokes warmth and quality, from soaring cathedral ceilings and exposed beams to the stylish near-new kitchen and wide wrap-around verandahs designed to capture the serenity of its setting.

Price: \$1,255,000
Council Rates: \$2,200.00/year (approx)



Nathan Owen

0422 144 720



David Geary

0413 681 125

109 Quarry Road
Rosewood

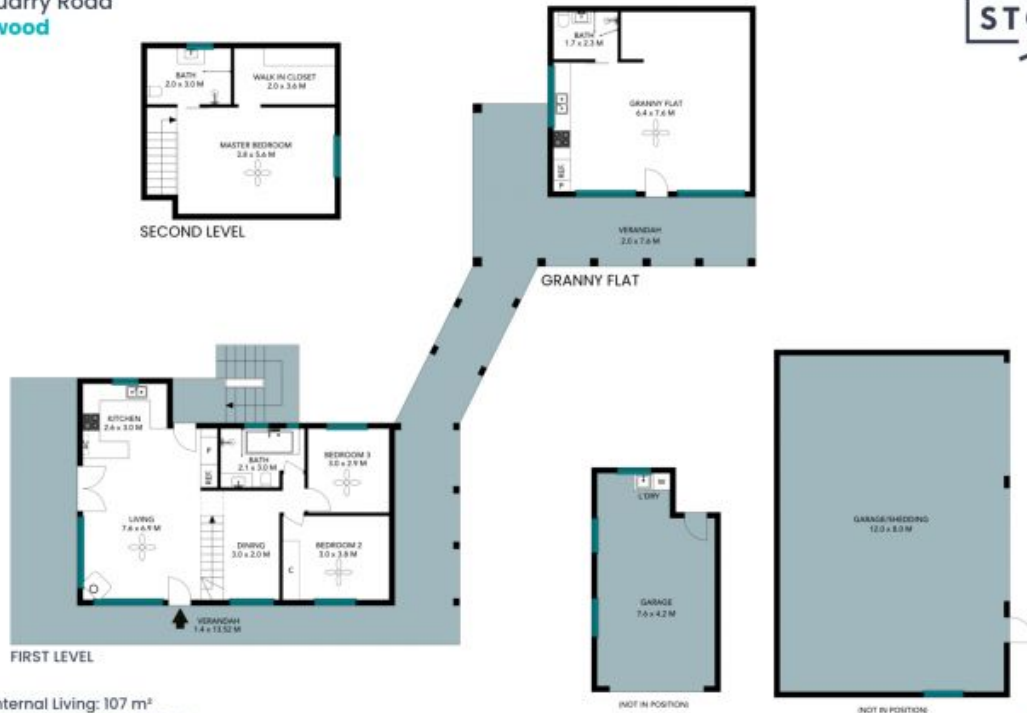


House Internal Living: 107 m²
Granny Flat Internal Living: 45 m²
Land Size: 3.14 Acres



The floor plan is not to scale; measurements are indicative and in metres. All features included in this 3D plan are for inspiration purposes only. This is not an exact replica of the property or the position of exterior elements. Plans should not be relied on. Interested parties should make and rely on their own enquiries.

109 Quarry Road
Rosewood



House Internal Living: 107 m²
Granny Flat Internal Living: 45 m²
Land Size: 3.14 Acres



The floor plan is not to scale, measurements are indicative and in metres. Exterior elements are not in position. Plans should not be relied on, interested parties should make and rely on their own enquiries. All other information provided has been collected from reliable sources but cannot be guaranteed for accuracy.