



96 Kinchela Street Gladstone, NSW

3 2 2

### Waterfront Living in Gladstone - Minutes to Beaches!

Set in the heart of Gladstone, this well-presented property offers comfortable living with direct access to the Macleay River. Enjoy a private deck, your own jetty, and a peaceful outlook that makes the most of this sought-after riverside location.

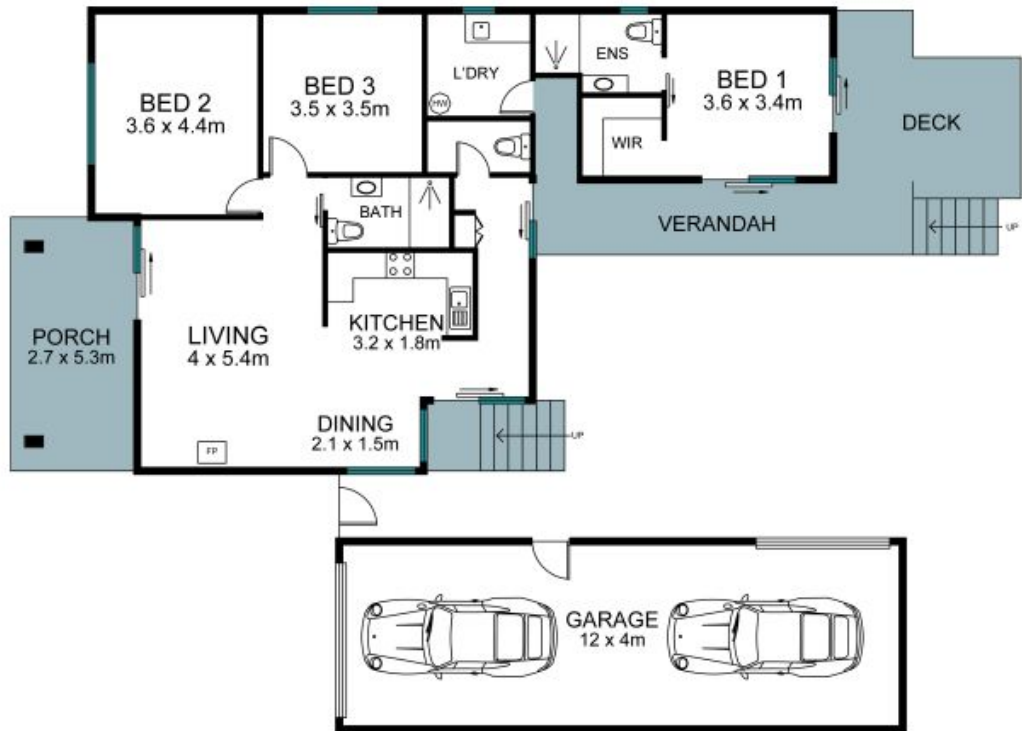
**Price:** \$850,000  
**Council Rates:** \$4,176.66/year (approx)



**Josh Wicks**

0448 637 509

96 Kinchela Street  
Gladstone



The site plan and floor plan are not to scale; measurements are indicative in meters. Bushes and trees are placed for illustration purposes. Plans should not be relied on. Interested parties should make and rely on their own inquiries. All other information provided has been collected from reliable sources but cannot be guaranteed for accuracy.