



6/30-32 Marion Street GYMEA, NSW

3  2  2 

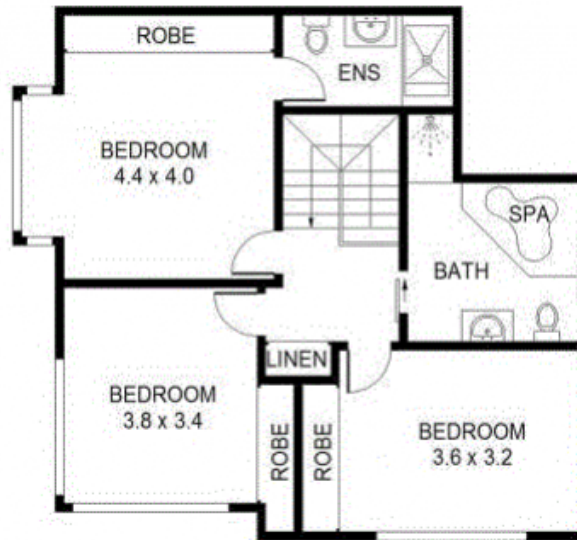
### Sun-drenched Family Townhouse

This superbly presented home offers open plan living and dining zones, three large bedrooms, and is ideally located only moments from Westfield Miranda, GyMEA Shopping Village, GyMEA Tradies and local schools. With a sun-drenched, northerly aspect, refined, elegant interiors and a beautifully maintained, courtyard and garden within which to relax, this home is the complete urban oasis.

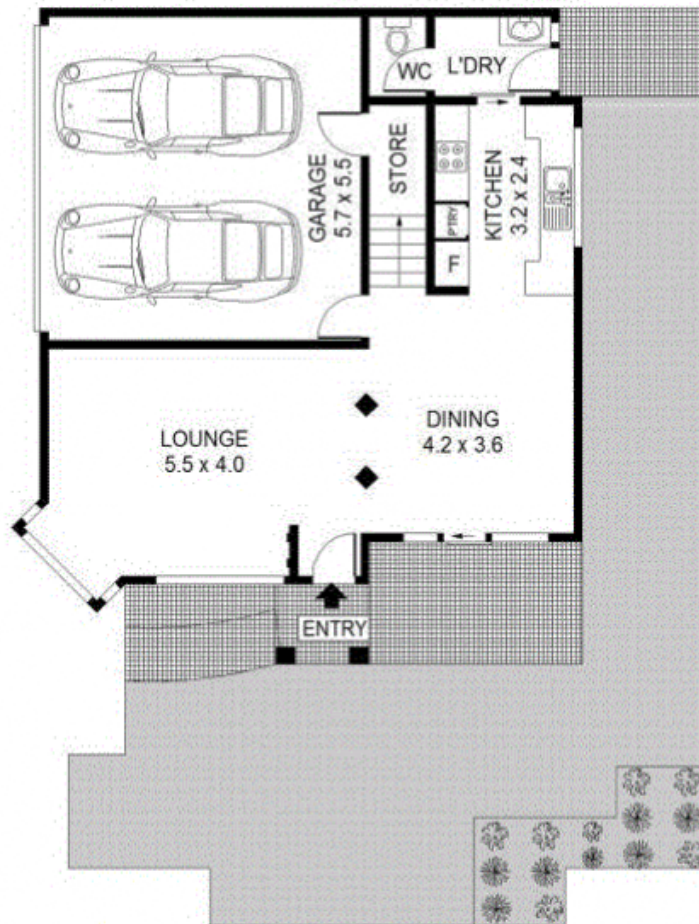
**Price:** CONTACT AGENT  
**Bond:** \$3,900  
**Available Date:** 13/02/2023

**Stone Engadine**

(02) 9520 2296



**TOP LEVEL**



**ENTRY LEVEL**

