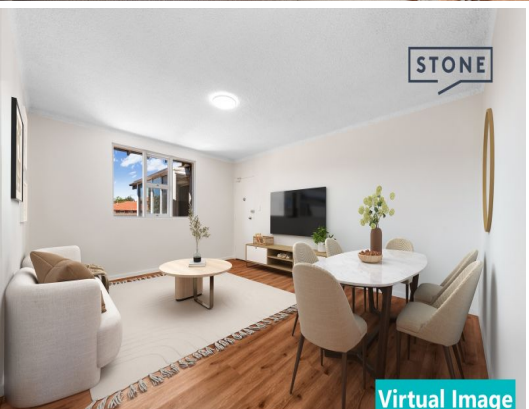
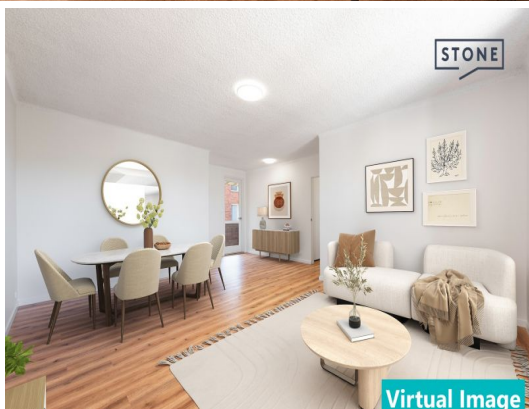




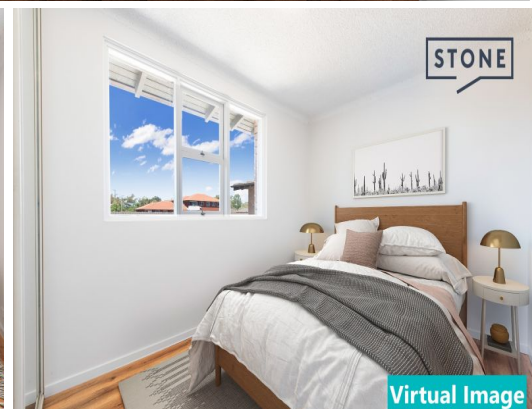
**SOLD
in a week
&
Building
record price
\$866,000**



Virtual Image



Virtual Image



Virtual Image

12/5 DEVITT Place Hillsdale, NSW 3 1 1

Boutique Block of 14 with Double Aspect & Exceptional Convenience

Ideally positioned beside Southpoint Shopping Centre & Heffron Park, this stylish three-bedroom apartment offers natural light, modern comfort & lifestyle convenience. Enjoy both North & South Aspects, allowing excellent cross-flow ventilation, abundant sunlight & an airy atmosphere throughout the day.

Price: SOLD Building record price 866k
Council Rates: \$391.90 p/q
Water Rates: \$213.42 p/q
Strata Rates: \$1,185.80 p/q



Ivan Gunawan
0421 032 760



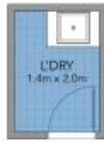
Mel Tjong
0433 436 553

STONE



APPROXIMATE AREAS

INTERNAL	63 m ²
BALCONY	3 m ²
GARAGE	15 m ²
LAUNDRY	3 m ²
TOTAL	104 m ²



LEVEL 3



HILLSDALE 12/5 Devitt Place

Scale in metres. Indicative only. All information contained herein is obtained from sources we believe to be accurate. We cannot guarantee its accuracy. Interested persons should make and rely on their own enquiries.