



425 Doveton Street Soldiers Hill, VIC



Brand-New 35 Square Townhouses in the Heart of Soldiers Hill ? Spacious, Modern Living Over Two Levels

Entertain. Work. Retreat. Live exceptionally.

Price: \$1,050,000 - \$1,100,000 ea



Rob Cunningham

0418 543 634



Rob Cunningham

0418 543 634

Internal 323m² External 189m² Total 512m² Landsize 392m²

Unit 1/ 425 Doveton Street North, **Soldiers Hill**



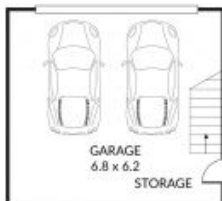
4 x 2 x 2 x



FIRST FLOOR



FIRST FLOOR



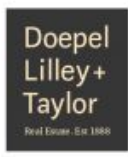
GROUND FLOOR



GROUND FLOOR



SITEPLAN



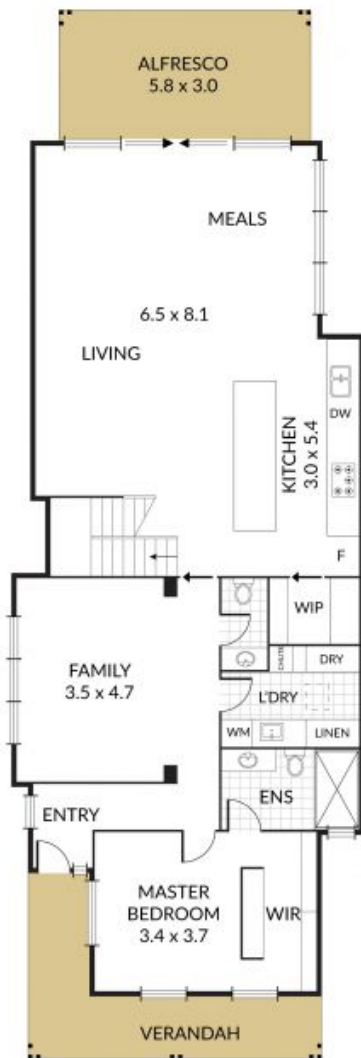
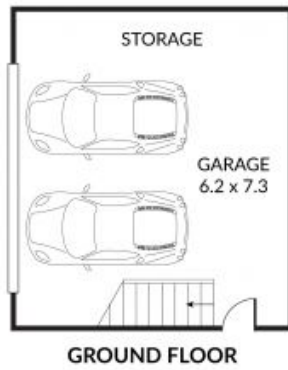
NOTE: Every precaution has been taken to verify the accuracy of the above details. However, prospective purchasers are advised to make their own enquiries.

Internal 319m² External 33m² Total 573m² Landsize 453m²

Unit 2/ 425 Doveton Street North, **Soldiers Hill**



4 x 2 x 2 x



GROUND FLOOR



FIRST FLOOR



SITEPLAN

**Doepel
Lilley +
Taylor**

Real Estate Est 1988

NOTE: Every precaution has been taken to verify the accuracy of the above details. However, prospective purchasers are advised to make their own enquiries.