

19 Malcolm Cole Terrace Whitlam, ACT 4 3 2

Separate titled, big on luxury and low on maintenance

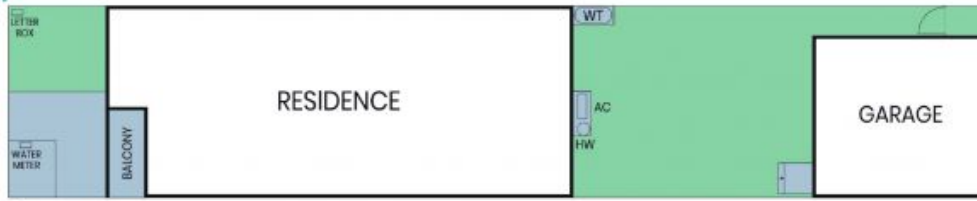
Price: \$1,050,000

Positioned in one of Whitlam's most elevated pockets, 19 Malcolm Cole Terrace delivers a rare opportunity to secure a new home of exceptional quality without the wait. Completed in the first half of 2025, this separate-title residence combines architectural presence, refined interiors and breathtaking views that sweep across the Brindabellas and Black Mountain.

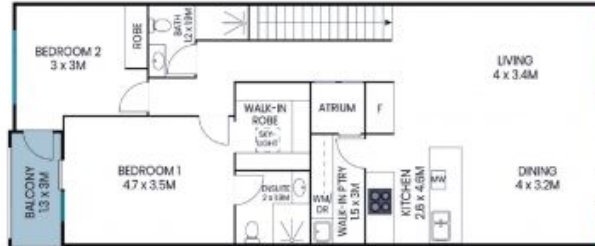


Sam Dyne

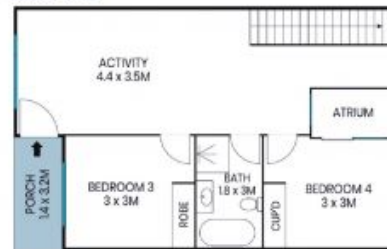
0488 689 525



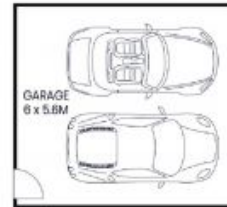
Site Plan



Level One



Ground Floor



(Not-in Position)



The site plan and floor plan are not to scale; measurements are indicative and in metres. Bushes and trees are placed for illustration purposes. Plans should not be relied on. Interested parties should make and rely on their own enquiries. All other information provided has been collected from reliable sources but cannot be guaranteed for accuracy.