

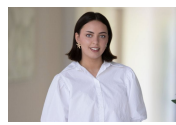


3/620 Pacific Highway Killara, NSW 2 1 1

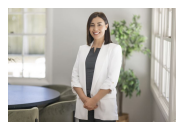
Light filled apartment amongst the trees

This beautifully, sun-filled apartment offers a peaceful and private lifestyle in a highly sought-after location. With large windows and a balcony showcasing tranquil, leafy views, this home provides a blend of comfort and convenience just moments from Killara Station and Killara Park.

Price: Deposit Taken
Available Date: 13/12/2025



Niamh Barber
0451 307 760



Darinka Vasilovska
0415 755 587

3/620 Pacific Hwy Kullara

