



7/10 Mallowa Crescent Port Macquarie, NSW

2 1 1

The perfect low-maintenance coastal opportunity.

This well-presented 2-bedroom unit offers a practical layout, light-filled interiors and low-maintenance living in a highly sought-after coastal pocket of Port Macquarie. Whether you're entering the market, downsizing, or looking for a smart investment, this property delivers effortless coastal appeal.

Price: \$545,000
Council Rates: \$2,600.00/year (approx)
Strata Rates: \$642.05 p/q



David Geary

0413 681 125



Nathan Owen

0422 144 720

7/10 Mallowa Crescent
Port Macquarie

STONE



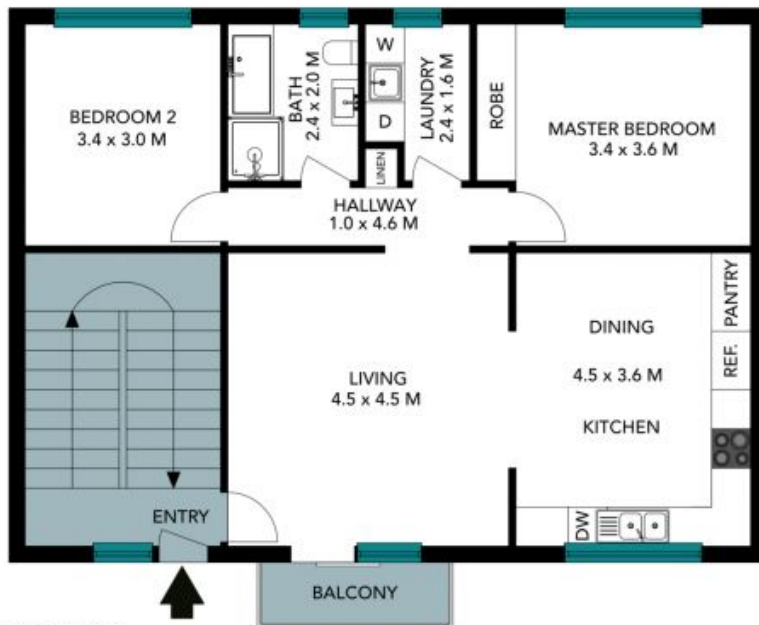
Internal Living: 75 sqm
External Living: 3 sqm
Land Size: 78 sqm



The floor plan is not to scale; measurements are indicative and in metres. All features included in this 3D plan are for inspiration purposes only. This is not an exact replica of the property or the position of exterior elements. Plans should not be relied on. Interested parties should make and rely on their own enquiries.

7/10 Mallowa Crescent
Port Macquarie

STONE



(NOT IN LOCATION)

Internal Living: 75 sqm
External Living: 3 sqm
Land Size: 78 sqm



The floor plan is not to scale, measurements are indicative and in metres. Exterior elements are not in position. Plans should not be relied on, interested parties should make and rely on their own enquiries. All other information provided has been collected from reliable sources but cannot be guaranteed for accuracy.