



159 Crescent Head Road South Kempsey, NSW

3

1

1

Space, Potential and Coastal Convenience on 2,467sqm

Set on a generous 2,467sqm block just 4km from Kempsey's town centre and only 16km from Crescent Head's iconic beaches, this solid three-bedroom home delivers space, convenience and plenty of future potential.

Price: \$635,000

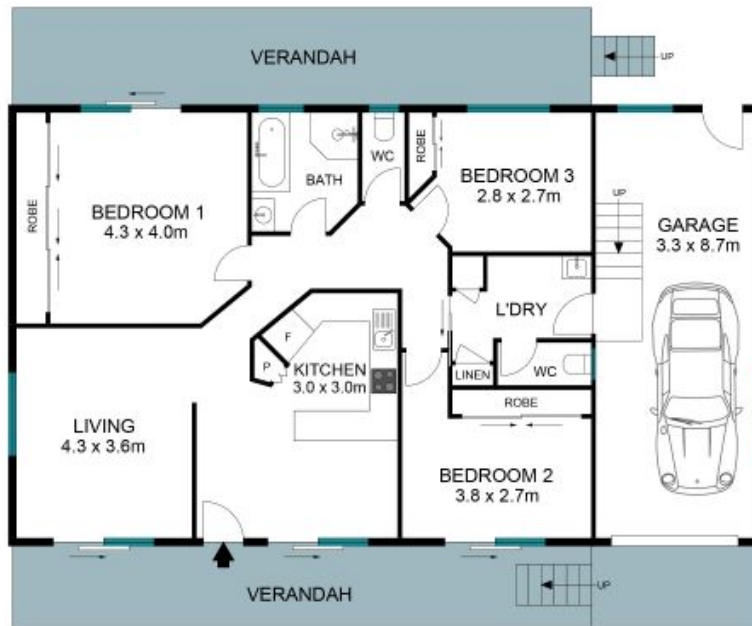
Council Rates: \$2,502.26/year (approx)



Josh Wicks

0448 637 509

159 Crescent Head Road
South Kempsey



The site plan and floor plan are not to scale; measurement are indicative in meters. Bushes and trees are placed for illustration purposes. Plans should not be relied on. Interested parties should make and rely on their own inquiries. All other information provided has been collected from reliable sources but cannot be guaranteed for accuracy.