



22/11 Stonelea Court Dural, NSW



Affordable over 55's living

The most affordable living in The Hills. Looking to downsize? Then look no further ?. Spacious, Strata Title apartment enjoys an abundance of natural light in a quiet position with a pleasing green outlook. Located close to the 'residence only' car park within the ultra-convenient 'Mountainview Retreat', a sought after over 55's retirement village at Round Corner Dural. Convenience is an understatement being approx. 100m to local bus transport and approx. 400m to Round Corner Shopping Village where you will find Woolworths, Aldi, eateries, medical facilities, and essential amenities (closer via walkway).

Price: \$410,000
Council Rates: \$263.90 p/q
Water Rates: \$172.83 p/q
Strata Rates: \$728.55 p/q



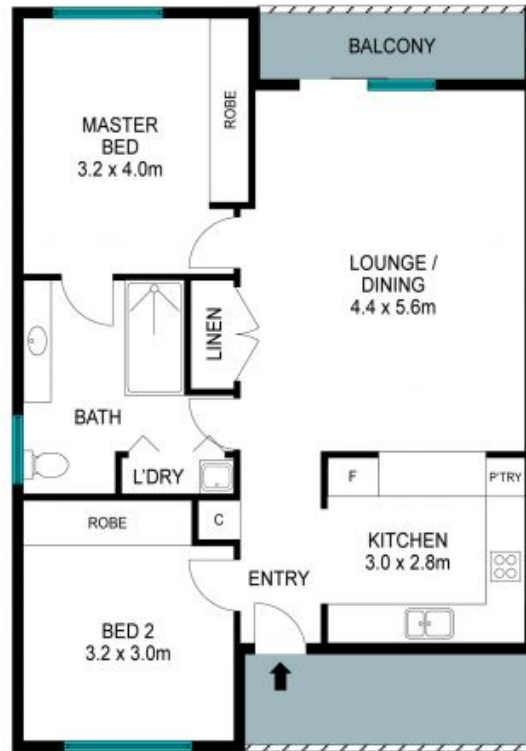
Viviane Mylott

0438 983 615



Jane Booty

0412 207 452



The site plan and floor plan are not to scale; measurements are indicative and in metres. Bushes and trees are placed for illustration purposes. Plans should not be relied on. Interested parties should make and rely on their own enquiries. All other information provided has been collected from reliable sources but cannot be guaranteed for accuracy.