



36 Toolang Road St Ives, NSW

4 

2 

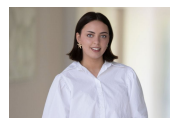
1 

Garden oasis family home

Designed with an ideal layout for both everyday living and entertaining, this home is a perfect blend of comfort and style. Set in a whisper-quiet cul-de-sac street across from Toolang Oval, this charming single-level home is conveniently located within walking distance of St Ives North Public School, shops, cafes, and amenities. Amid beautifully manicured level gardens, it is the perfect haven for a busy family.

Price: Deposit Taken

Available Date: 17/12/2025



Niamh Barber

0451 307 760



Darinka Vasilovska

0415 755 587