



142 Gipps Street Gwynneville, NSW

3 

2 

3 

SOLD BY STONE REAL ESTATE | NEIL WEBSTER & YENSON MUI

Price: \$1,320,200

Prime potential on a flat 566sqm (approx.) with 15.24m (approx.) frontage



Neil Webster

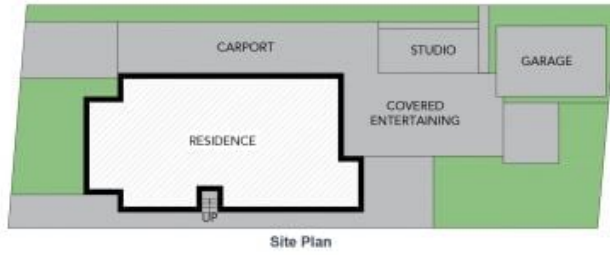
0439 028 748



Yenson Mui

0421 882 541

142 Gipps Street
Gwynneville



The site plan and floor plan are not to scale; measurements are indicative and in metres. Bushes and trees are placed for illustration purposes. Plans should not be relied on. Interested parties should make and rely on their own enquiries. All other information provided has been collected from reliable sources but cannot be guaranteed for accuracy.