



68 Cocoparra Crescent Crace, ACT

3

2

1

### Set in Sought-After Crace, Central and Connected

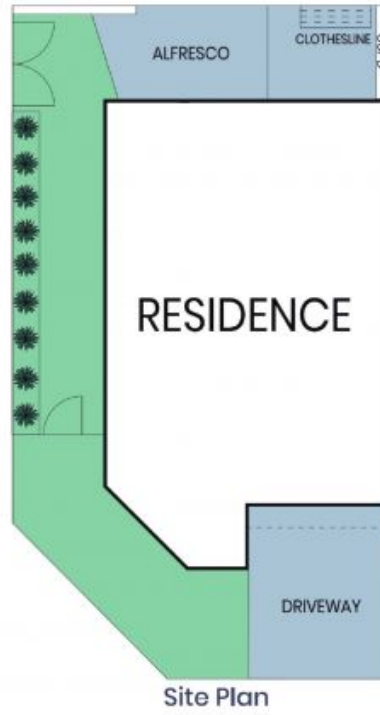
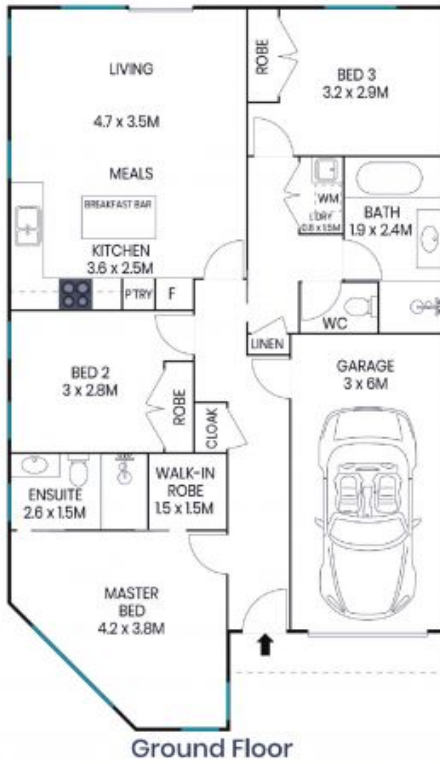
Sun-filled, stylish and effortlessly functional, 68 Cocoparra Crescent in Crace, blends modern comfort with seamless indoor, outdoor living. The light-filled living area opens directly to the alfresco, creating a welcoming space for everyday entertaining. At the heart of the home is a contemporary kitchen featuring a detailed splashback, gas cooktop, electric pyrolytic oven and a newly installed breakfast bar, perfectly connecting the kitchen, dining and living zones.

**Price:** \$745,000+



**Jess Doolan**

0477 775 773



The site plan and floor plan are not to scale; measurements are indicative and in metres. Bushes and trees are placed for illustration purposes. Plans should not be relied on. Interested parties should make and rely on their own enquiries. All other information provided has been collected from reliable sources but cannot be guaranteed for accuracy.

68 Cocoparra Crescent  
Crace



Ground Floor



The floor plan is not to scale; measurements are indicative and in metres. All features included in this 3D plan are for inspiration purposes only. This is not an exact replica of the property or the position of exterior elements. Plans should not be relied on. Interested parties should make and rely on their own enquiries.