

4 Allandale Street Pelaw Main, NSW

2 1 1

Lush quarter of an acre property with two bedroom cottage

Set on approximately 1,012sqms in a tranquil pocket of the intimate community of Pelaw Main, 4 Allandale Street, is the perfect property for someone with a green thumb or an investor looking for a potential dual-occ site (STCA). Surrounded by parks and reserves, this block has the house positioned at the front, while the back of the lot has been fenced off with a separate paddock accessed by a rear lane.

Price:

Contact Agent



Renee Bean-Wyper

0403 325 076

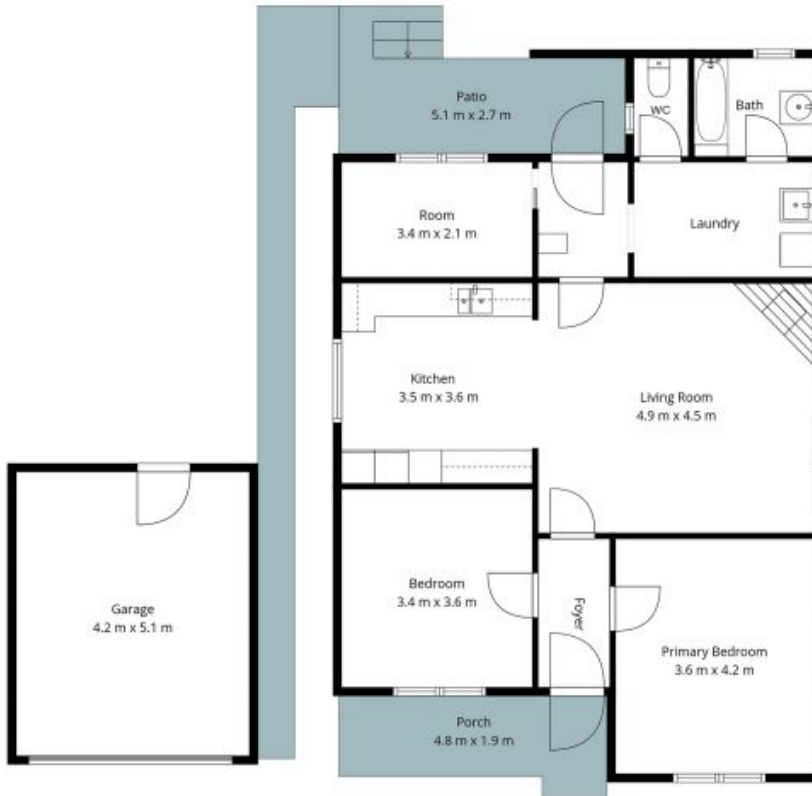


Jorja Pauling

0435 930 665

4 Allandale Street
Pelaw Main

STONE



Site Map



The site plan and floor plan are not to scale; measurements are indicative and in metres. Bushes and trees are placed for illustration purposes. Plans should not be relied on. Interested parties should make and rely on their own enquiries. All other information provided has been collected from reliable sources but cannot be guaranteed for accuracy.