



51/1 Lauderdale Avenue Fairlight, NSW

3

2

1

Mesmerising Harbourfront Luxury With Spectacular 270° Views

Commanding a truly awe-inspiring 270° panorama stretching uninterrupted from North Harbour to Manly Wharf and out through Sydney Heads to the open ocean, this prestigious harbourfront residence is a masterclass in refined coastal living, showcasing sunlit indoor/outdoor space with an expansive wraparound terrace, a vast open-plan living and dining zone that flows seamlessly outdoors, and a serene harbourside position on the 13th floor of a tightly held landmark building with lift access and manicured park-like grounds, all within footsteps of Fairlight Beach and the scenic coastal walk to Manly.

Price: Deposit Taken!

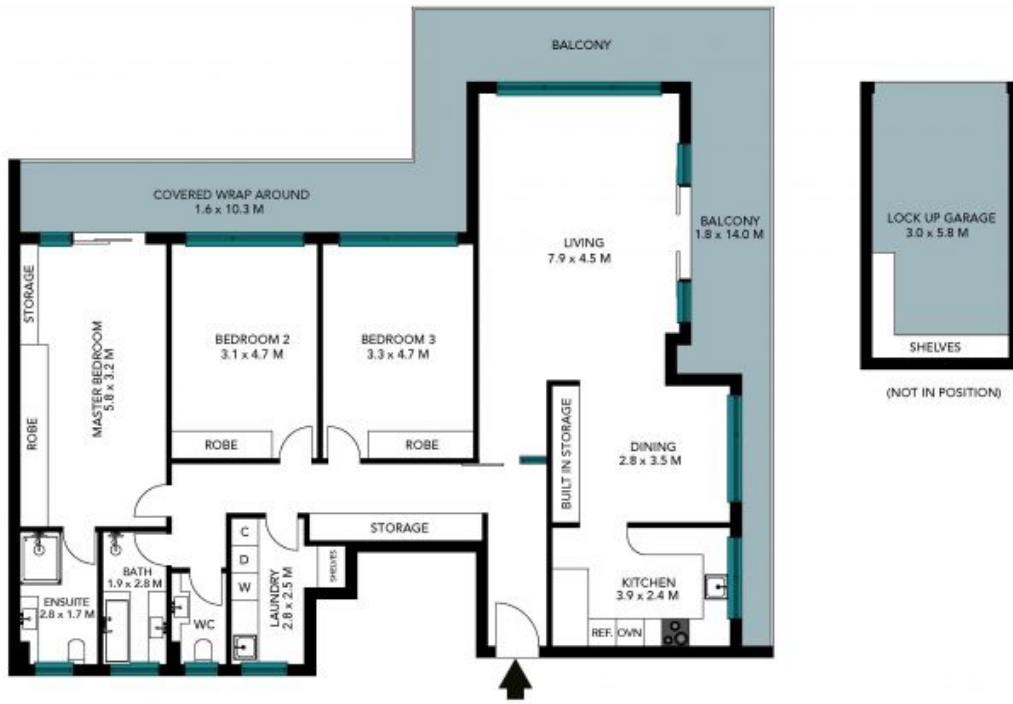
Bond: \$10,400

Available Date: 17/01/2026



Nathan McKeown

0449 841 991



The floor plan is not to scale, measurements are indicative and in metres. Exterior elements are not in position. Plans should not be relied on, interested parties should make and rely on their own enquiries. All other information provided has been collected from reliable sources but cannot be guaranteed for accuracy.

51/1 Lauderdale Avenue
Fairlight

STONE



The floor plan is not to scale; measurements are indicative and in metres. All features included in this 3D plan are for inspiration purposes only. This is not an exact replica of the property or the position of exterior elements. Plans should not be relied on. Interested parties should make and rely on their own enquiries.