



12 Circulo Drive Copacabana, NSW



Elevated Coastal Living - Pool, Views & Triple Garage

Set in an elevated position on a generous 764 sqm block, this solid and beautifully maintained home delivers relaxed coastal living with lake views and a tree-filtered beach vista, all just a short walk to the beach.

Inspect: Saturday, 23rd May 2026 10:00 - 10:30

Price: Contact Agent

Council Rates: \$3,815.61/year (approx)

Water Rates: \$1,185.08/year (approx)



Andrew Thomson

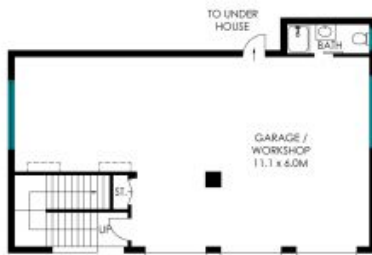
0405 103 077



Samantha Washington

0401 785 592

12 Circulo Drive,
Copacabana



Lower level



Ground Level



Site Plan

Total Living Area: 256 sqm



The site plan and floor plan are not to scale; measurements are indicative and in metres. Bushes and trees are placed for illustration purposes. Plans should not be relied on. Interested parties should make and rely on their own enquiries. All other information provided has been collected from reliable sources but cannot be guaranteed for accuracy.