



36 Main Street Smithtown, NSW

5 2 4

Smithtown Gem on Nearly One Acre

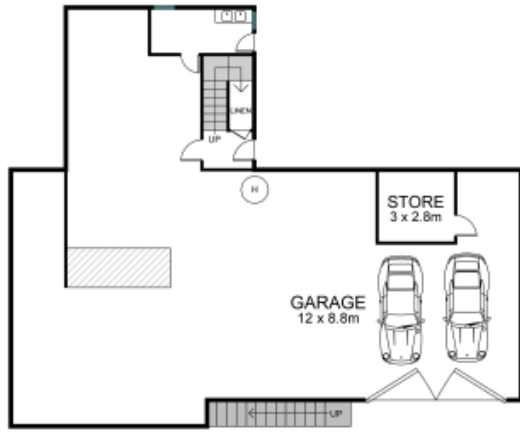
Set on an impressive 3,948sqm (almost one acre), this generously sized property offers a rare opportunity to secure space, versatility, and future potential right in the village of Smithtown.

Price: \$599,000
Council Rates: \$2,470.00/year (approx)

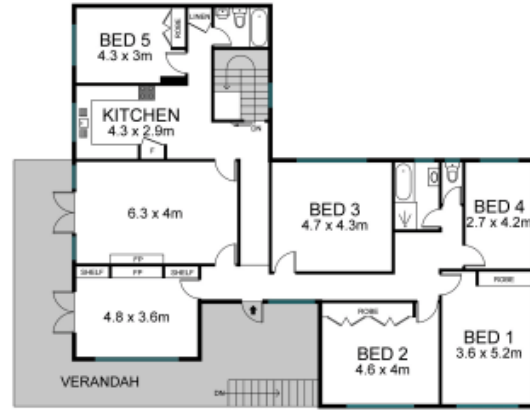


Carlos Peters

0427 256 570



LOWER LEVEL



UPPER LEVEL

The site plan and floor plan are not to scale; measurement are indicative in meters. Bushes and trees are placed for illustration purposes. Plans should not be relied on. Interested parties should make and rely on their own inquiries. All other information provided has been collected from reliable sources but cannot be guaranteed for accuracy.