



24 Keswick Avenue Castle Hill, NSW



Modern, single level smart home, parkside retreat with freestanding studio

**Price:** Contact Agent  
**Council Rates:** \$574.40 p/q  
**Water Rates:** \$204.13 p/q



**James Ramsay**

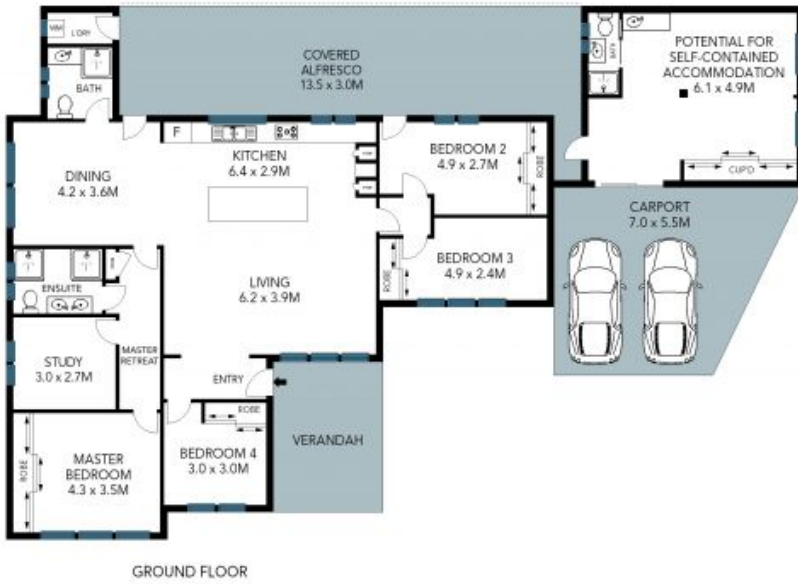
0420 665 913



**Jessica Zhou**

0412 733 135

24 Keswick Avenue,  
Castle Hill



GROUND FLOOR



SITE PLAN

The site plan and floorplan are not to scale; measurements are indicative of metres. Bushes and trees are placed for illustration purposes. Plans should not be relied on. Interested parties should make and rely on their own enquiries. Other information provided has been collected by reliable sources but cannot be guaranteed for accuracy.