



VIRTUAL IMAGE



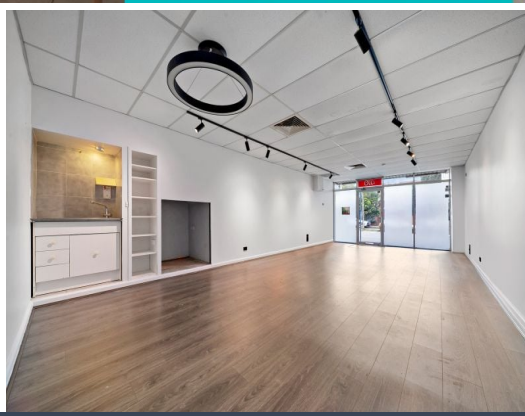
STONE

VIRTUAL IMAGE



STONE

VIRTUAL IMAGE



478 Bunnerong Road Matraville, NSW

SHOP/RESIDENCE 95m² WITH REAR LANE GARAGE ? PRIME MAIN ROAD LOCATION

Position your business in this versatile 100m² ground-floor shop/residence located in the heart of Matraville. Offering excellent exposure on a busy main road with a bus stop directly in front, this property is ideal for retail, office, medical, studio, or service-based businesses seeking visibility and convenience.



Stone Maroubra

02 8201 3388



Dino Caruso

0425 342 841

Shop 1/478 Bunnerong Road
Matraville

STONE



The floor plan is not to scale, measurements are indicative and in metres. Exterior elements are not in position. Plans should not be relied on, interested parties should make and rely on their own enquiries. All other information provided has been collected from reliable sources but cannot be guaranteed for accuracy.