

4/25 Traminer Place Eschol Park, NSW



A beautifully updated villa in a boutique complex

Positioned in a peaceful street within a boutique complex of only five, this well-maintained two-bedroom villa presents an excellent opportunity for those seeking low-maintenance living in a highly convenient Eschol Park location. Backing onto a beautiful neighbouring park and reserve, the home combines comfort, functionality and long-term appeal in a quiet, tightly held setting.

Price: \$674,000
Council Rates: \$392.00 p/q
Strata Rates: \$909.00 p/q



Michelle Balabka

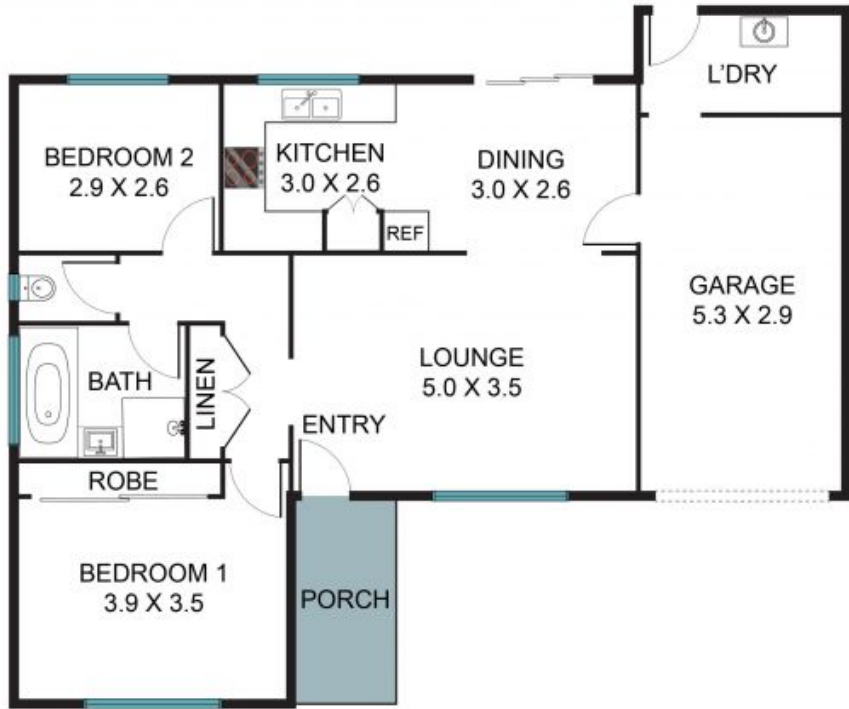
0419 473 253



Danielle Pollard

0434 251 056

STONE



4/25 Traminer Pl, Eschol Park NSW 2558



The floor plan is not to scale, measurements are in metres. Exterior elements are not in position.
Plans should not be relied on. Interested parties should make and rely on their own enquiries.
All other information provided has been collected from reliable sources but cannot be guaranteed for accuracy.