



4 Kethel Road Cheltenham, NSW



Comfortable living in a sought-after Cheltenham pocket. Garden Maintenance Included!

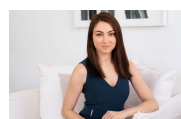
Enjoy this spacious family home with its light-filled interiors and large windows make an outstanding setting for delightful family life.

Price: \$1,300 per week
Available Date: 12/01/2026



Ashleigh Gray

02 8893 2222



Sarah Hastings

02 8893 2218

4 Kethel Road, Cheltenham

4  2  2  2  1157m²



GROUND LEVEL



ENTRY LEVEL



THIS IS AN ARTIST'S IMPRESSION - ALL DIMENSIONS, LAYOUTS AND TREES ARE APPROXIMATE
ALL INTERESTED PARTIES SHOULD MAKE AND RELY ON THEIR OWN ENQUIRIES

