



2/33 Allan Street Kilmore, VIC

3 1 2 2

### Sought after home in heart of Kilmore

Welcome to 2/33 Allan Street ? a stylish and thoughtfully designed townhouse offering modern comfort, generous proportions, and a low-maintenance lifestyle in a well-connected Kilmore location. Ideal for families, professionals, or downsizers, this home delivers flexibility across two light-filled levels.

**Price:** \$500 pw  
**Available Date:** 22/01/2026



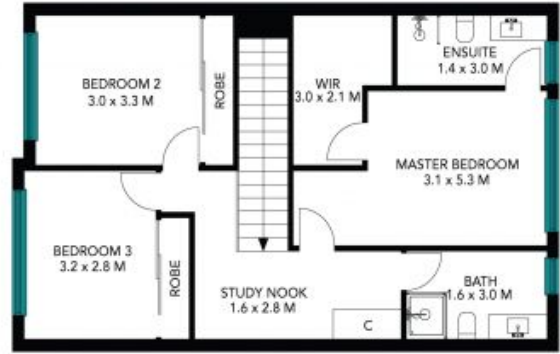
**Jessica Conte-Singh**  
0400 134 550



**Chloe Dwyer-Fraser**  
0466 669 118



Ground Floor



First Floor

Internal Living: 160 sqm  
External Living: 0 sqm  
Total Living Area: 160 sqm





Ground Floor



First Floor

Internal Living: 160 sqm  
External Living: 0 sqm  
Total Living Area: 160 sqm



The floor plan is not to scale; measurements are indicative and in metres. All features included in this 3D plan are for inspiration purposes only. This is not an exact replica of the property or the position of exterior elements. Plans should not be relied on. Interested parties should make and rely on their own enquiries.