



54 Cambria Drive Dolphin Sands, TAS

5

2

11

A Rare Coastal Retreat Opportunity in a Sought-After Peninsula Setting

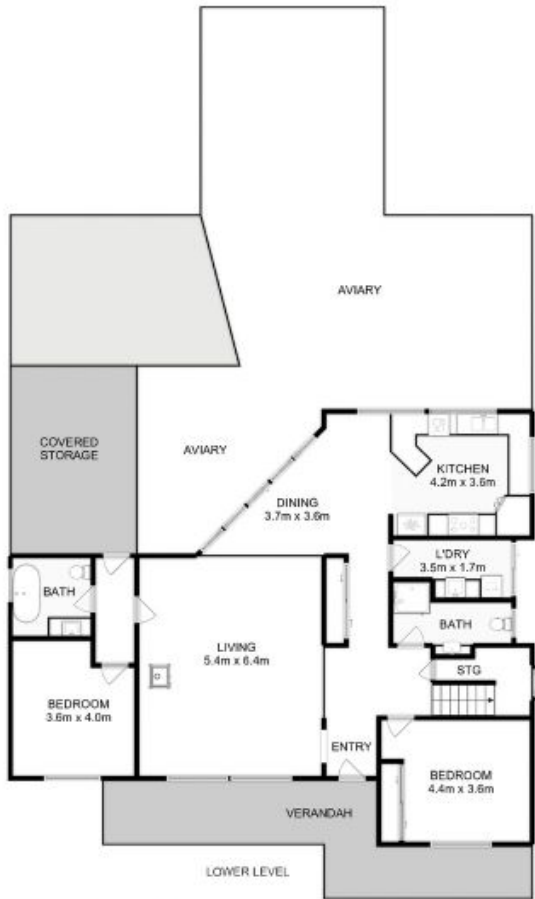
Positioned in one of Tasmania's most tightly held coastal locations, 54 Cambria Drive, Dolphin Sands presents a rare opportunity to secure a substantial home on approx 1.44 ha of land or approx 3.5 acres, in a highly sought-after peninsula renowned for its pristine beaches, relaxed lifestyle and natural beauty.

Price: \$750,000 to \$780,000



Jane Bendall

0407 672 204



Total Approx. Floor Area : 228 sqm

All measurements are internal and approximate.
 This plan is a sketch for illustration, not valuation.
 Produced by Open2view.com