



14/497-507 Pacific Highway Killara, NSW



Pre-Market Opportunity | Light-Filled Apartment with Northerly Aspect

Positioned at the northern end of a well-established and well-maintained development, this generously proportioned apartment enjoys a northerly aspect, good natural light, and a practical layout. Offering an easy, low-maintenance lifestyle with leafy outlooks, it is conveniently located within walking distance to transport, schools, local shops, parks, and Killara Golf Course.

Price:

Pre-Market Opportunity



Andrew Braid

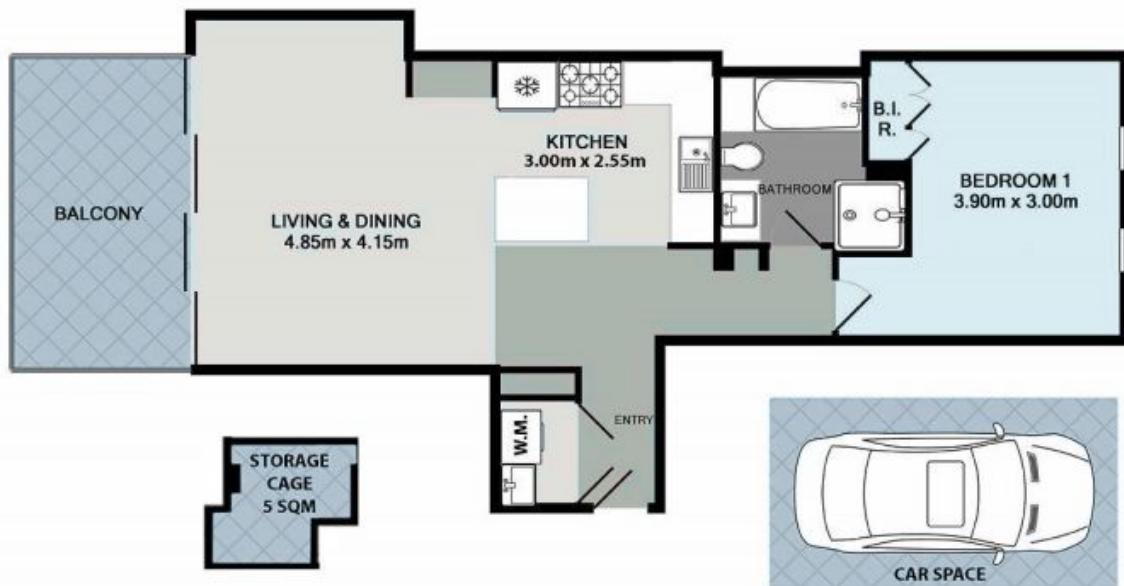
0404 979 597



Claudia Conroy

0449 945 358

STONE



14/497-507 Pacific Highway Killara

Disclaimer: This floor plan is for presentation purposes only and is not part of any legal document or title. It may contain errors, omissions, or inaccuracies and should not be relied upon as an exact representation. Interested parties are encouraged to conduct their own inquiries using independent sources.