



Raine&Horne



Raine&Horne



Raine&Horne

Wollstonecraft, NSW



Stylish two bedroom Apartment in fabulous location.

Nestled at the rear of an iconic Wollstonecraft Block, this renovated two bedroom apartment offers a bright, light contemporary living space with city skyline and Harbour Bridge views. Tastefully renovated with a modern neutral palate and quality fixtures and fittings. Enviably positioned only a few minutes walk to Wollstonecraft Station and an easy still to Crows Nest's dining district.

- Set at the rear of the block
- Open plan lounge / dining rooms
- Good sized East- facing balcony with North Sydney skyline, Darling Harbour and Harbour Bridge Views
- Modern kitchen with ample storage
- Sparkling new bathroom with quality fixtures and fittings
- Huge main bedroom with built-ins and leafy outlook, double 2nd bedroom
- Internal Laundry
- Open car space

Price: \$820 per week

Bond: \$3,680

Available Date: 11/02/2026



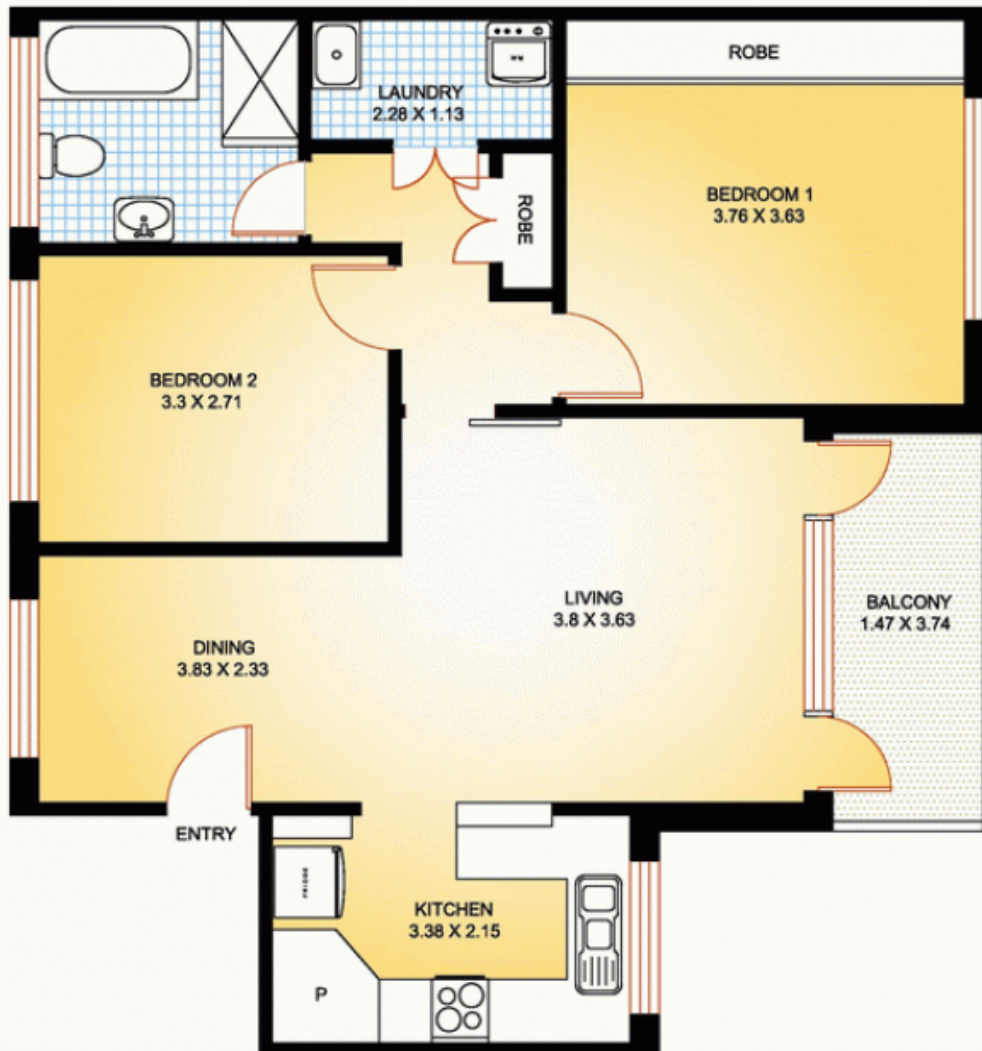
Sharon Curran

02 9439 3488

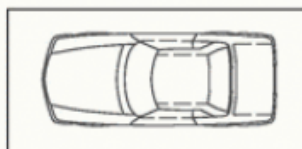


Charlie Ayles

02 56 593 964



CAR SPACE



10 / 49 SHIRLEY ROAD WOLLSTONECRAFT



Floor plan disclaimer: Floor plan shown is for presentation purposes and is not part of any legal document or title. All measurements and figures are approximate. Interested parties should make their own enquiries. CAD drafting services: larwell@gmail.com