

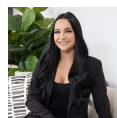


6/41 Santana Road Campbelltown, NSW 2 2 1

### Well-presented 2-bedroom apartment in prime position

Enjoy the best of modern living in this spacious two-bedroom, ground-floor apartment, perfectly positioned in the highly sought-after Park Central precinct. Thoughtfully designed and generously proportioned, this contemporary home offers outstanding convenience with Macarthur Square, the train station, Campbelltown Public and Private Hospitals, and Western Sydney University all just a short stroll away. Surrounded by vibrant dining and entertainment options and the expansive open spaces of Marsden Park, it promises an unbeatable lifestyle in one of the area's most desirable pockets.

**Price:** \$580 per week  
**Bond:** \$2,320  
**Available Date:** 22/01/2026



**Leasing Department**  
 0481064443  
**Stone Macarthur**