



Raine&Horne



Raine&Horne



Raine&Horne

605/284 Pacific Highway Greenwich, NSW



### Delightful Studio with Panoramic Views

Bright and inviting, this apartment opens onto a balcony with stunning panoramic views. Located on the 6th floor of a secure building, it features spacious open-plan living, comfortable carpeted floors, and a built-in wardrobe for convenient storage.

**Price:** \$450 per week

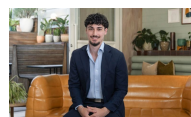
**Bond:** \$1,800

**Available Date:** 19/02/2026



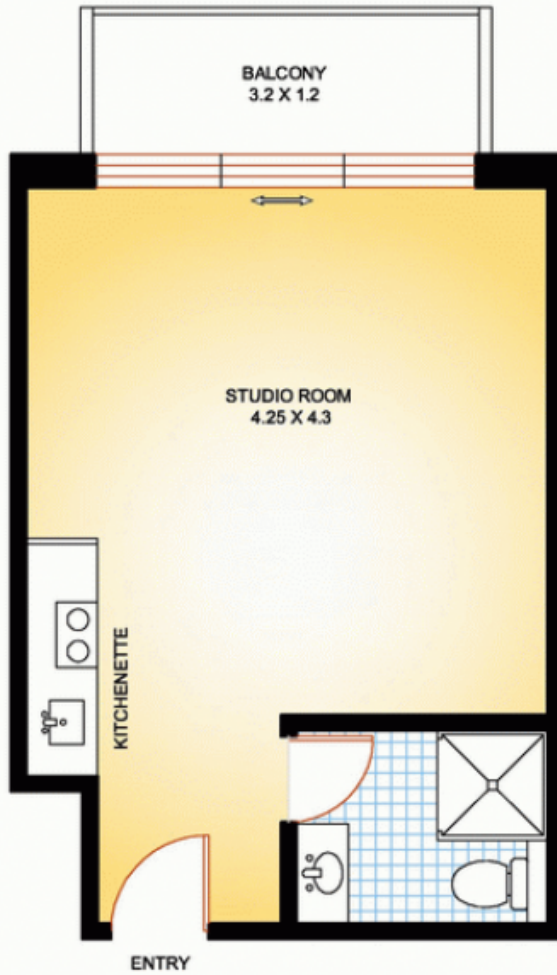
**Debora Tecchio**

0431 583 306

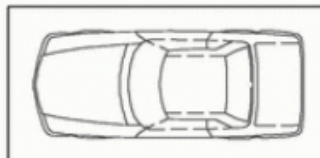


**Daniel Settineri**

0449 116 041



CAR SPACE



**605 / 284 PACIFIC HIGHWAY GREENWICH**



Floor plan disclaimer: Floor plan shown is for presentation purposes and is not part of any legal document or title. All measurements and figures are approximate. Interested parties should make their own enquiries. CAD drafting services: lanee4@gmail.com