

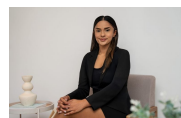


11/30-32 Lydbrook Street Westmead, NSW



Modern Comfort & Prime Convenience in the Heart of Westmead

Price: \$550,000 - \$600,000



Natasha Chand

0414 687 418

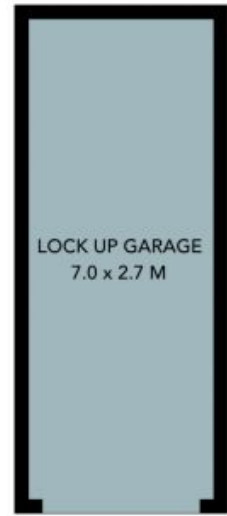
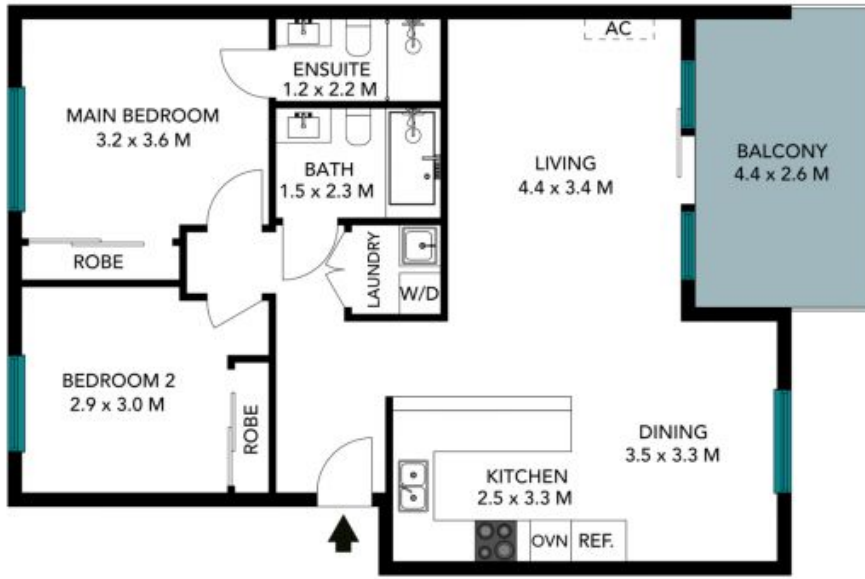


Tava Wekwete

0433 534 878

11/30-32 Lydbrook Street
Westmead

STONE



(NOT IN POSITION)



The floor plan is not to scale, measurements are indicative and in metres. Exterior elements are not in position. Plans should not be relied on, interested parties should make and rely on their own enquiries. All other information provided has been collected from reliable sources but cannot be guaranteed for accuracy.

11/30-32 Lydbrook Street
Westmead



The floor plan is not to scale; measurements are indicative and in metres. All features included in this 3D plan are for inspiration purposes only. This is not an exact replica of the property or the position of exterior elements. Plans should not be relied on. Interested parties should make and rely on their own enquiries.