



1206A/22 Dorcas Street South Melbourne, VIC



Stylish Inner-City Living at The Elm

Welcome to 1206A/22 Dorcas Street - a sleek and well-appointed one-bedroom apartment set within the sought-after Elm complex, where lifestyle and location align perfectly.

Price: \$515 pw
Available Date: 12/03/2026



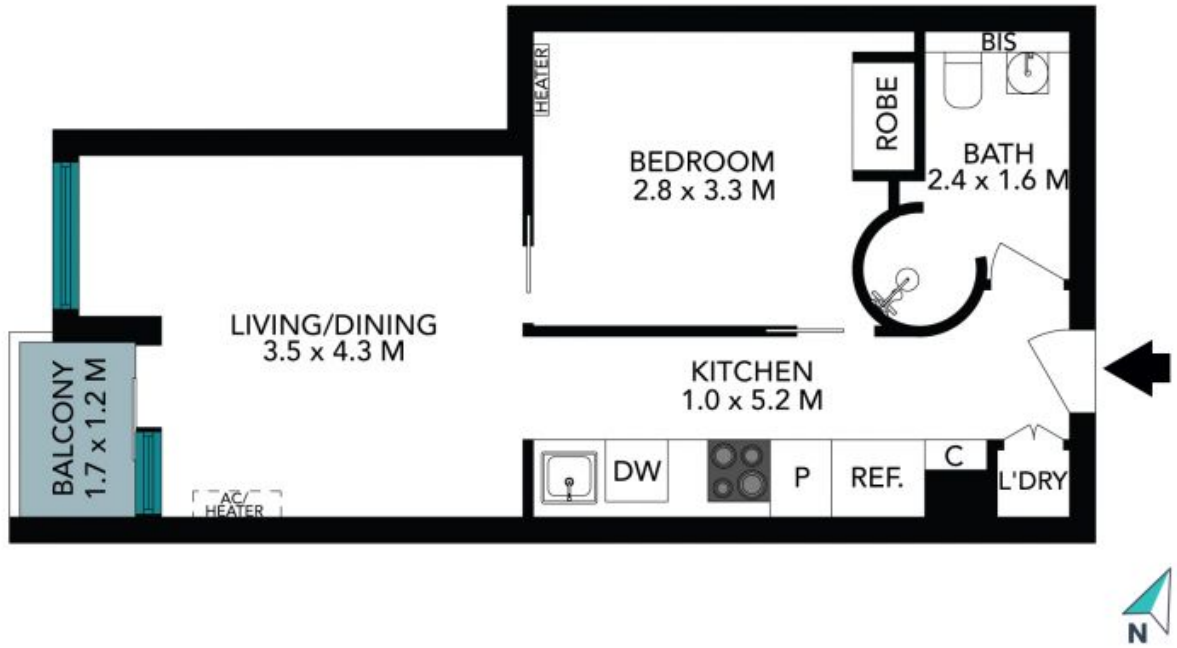
Jessica Conte-Singh

0400 134 550



Chloe Dwyer-Fraser

0466 669 118



The floor plan is not to scale; measurements are indicative and in metres. Fixture elements are not in position. Plans should not be relied on. Interested parties should make and rely on their own enquiries. All other information provided has been collected from reliable sources but cannot be guaranteed for accuracy.

1206A/ 22 Dorcas St
South Melbourne



The floor plan is not to scale; measurements are indicative and in metres. All features included in this 3D plan are for inspiration purposes only. This is not an exact replica of the property or the position of exterior elements. Plans should not be relied on. Interested parties should make and rely on their own enquiries.