



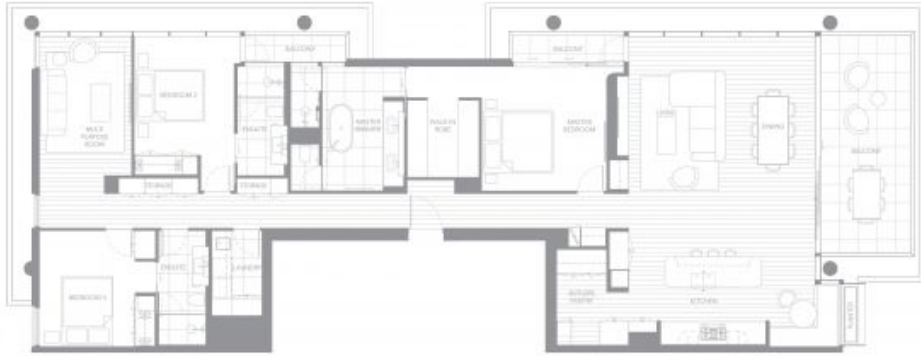
100 Musgrave Street Kirra, QLD

Emerson Kirra

Hirsch & Faigen continues its legacy of pioneering excellence on the Southern Gold Coast with Emerson, a truly boutique edition of luxurious residences at Kirra. Rothelowman, Brisbane's premier architecture studio, brings the project to life both inside and out, combining the understated elegance of a classic beachside aesthetic interpreted in a thoroughly modern way for contemporary Kirra living.

3 Bedroom

INTERIOR
208sqm
EXTERIOR
29sqm
TOTAL
237sqm



PERCY PEASE
PARK

N
→



APARTMENT TYPE B2
501, 601, 701, 801, 901, 1001, 1101, 1201

0 1m 2m 3m

110 MUDGEVAY STREET, COOLANGATTA, QLD, 4215
This floorplan including furniture, fixture measurements and dimensions are approximate and for illustration purposes only.

3 Bedroom

INTERIOR
209sqm
EXTERIOR
29sqm
TOTAL
238sqm



PERCY PEASE
PARK

N
→



APARTMENT TYPE C2
502, 602, 702, 802, 902, 1002, 1102, 1202

0 1m 2m 3m

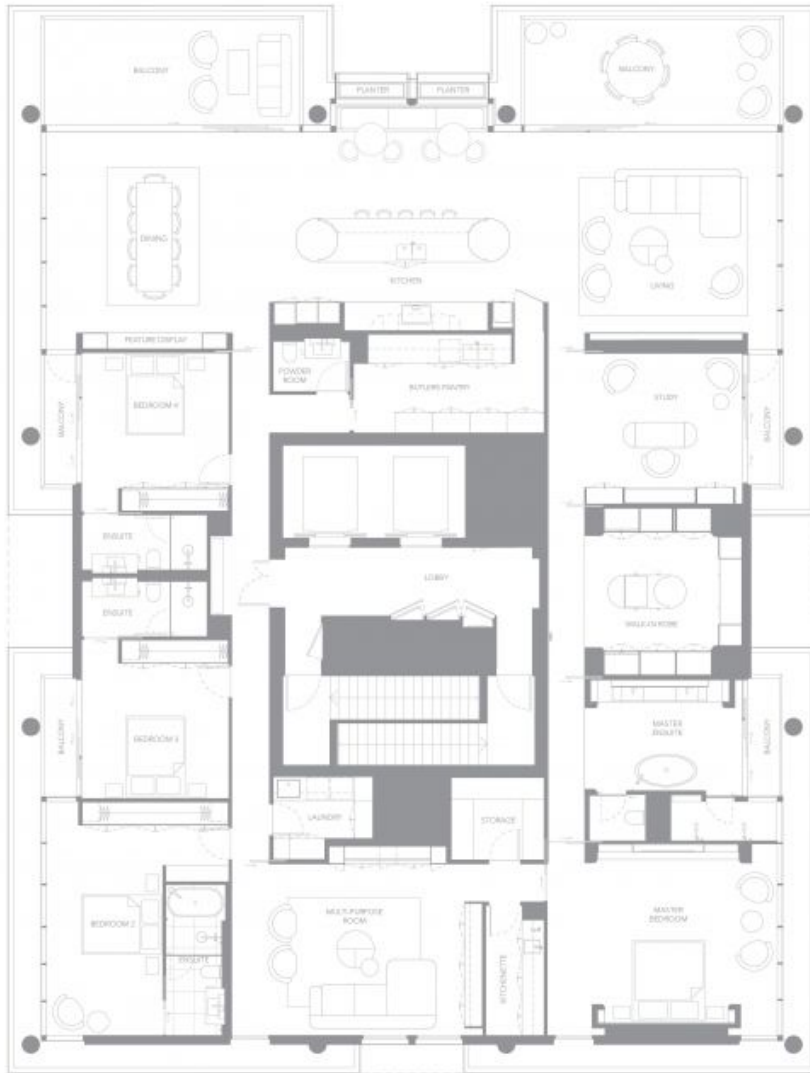
100 MURKINS STREET, COOLANGATA, QLD, 4215
This floorplan including furniture, fixture measurements and dimensions are approximate and for illustration purposes only.

Penthouse
4 bedrooms

INTERIOR
437sqm
EXTERIOR
58sqm
TOTAL
495sqm



PERCY PEASE PARK



0 1m 2m 5m

100 MUSGRAVE STREET, COOLANGATTA, QLD, 4225
The floorplan including furniture, floor measurements and dimensions are approximate and for illustrative purposes only.