

218/99 Military Road Neutral Bay, NSW



Modern Quiet Apartment Facing Cheal Lane with Carspace

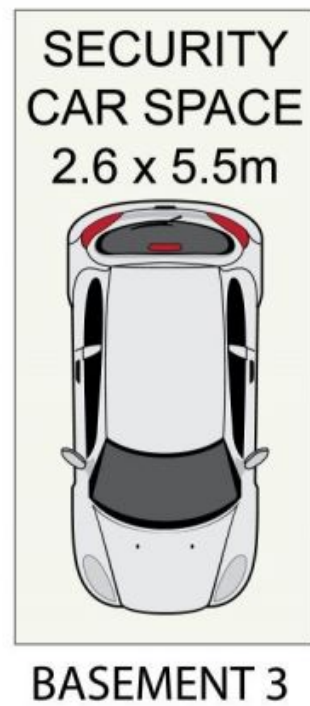
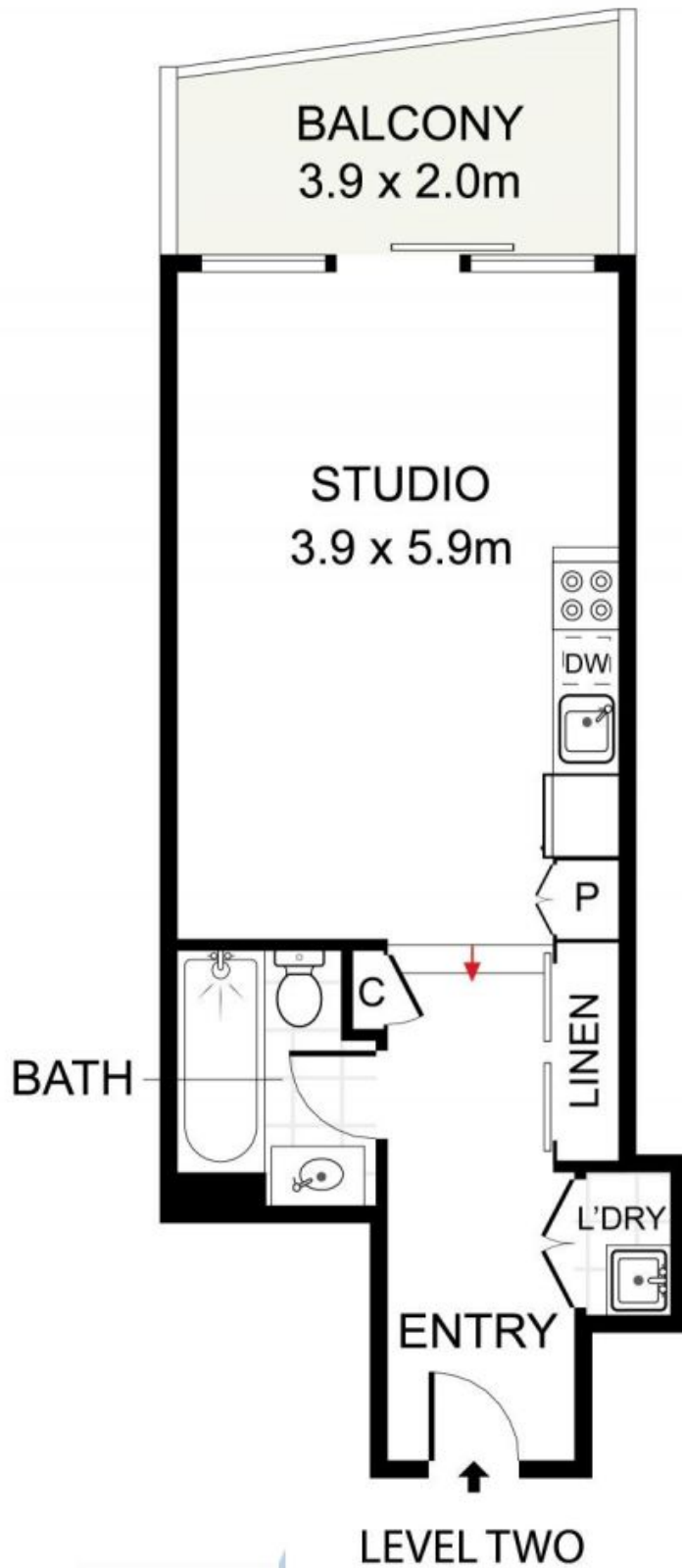
Tran Welcome to your new lifestyle pad in the heart of Neutral Bay. Located on the second floor, this superb and quiet apartment is ideally located at the rear of the secure "Maximillian" Building facing Cheal Lane, ensuring peace and privacy. Neutral Bay is one of the most desirable and fashionable North Shore suburbs, minutes from CBD. You can take a short walk to the city bus stop, or stroll to Neutral Bay shops, cafes, pub, bars, restaurants, cafes, parks and delightful walks. This is a great place to live or to have as an investment property.

Price: \$650,000



Fay Petrou

0411 502 002



218/99 Military Road, Neutral Bay

DISCLAIMER: PLANS SHOWN ARE FOR PRESENTATION PURPOSES AND ARE NOT PART OF ANY LEGAL DOCUMENT. ALL MEASUREMENTS AND FIGURES ARE APPROXIMATE.