



505/2 Chester Street Epping, NSW



### One bedroom plus study with north facing views

This beautifully maintained apartment is situated in a stylish boutique complex, ideally located near parks, trains, shops, and restaurants. Offering a spacious open-plan layout with leafy outlooks, this home delivers a private and peaceful lifestyle perfect for professionals, young couples, or first-home buyers.

**Inspect:** Saturday, 16th May 2026 10:00 - 10:30

**Price:** \$658,000  
**Council Rates:** \$325.80 p/q  
**Water Rates:** \$208.77 p/q  
**Strata Rates:** \$677.65 p/q



**Tahlia Zheng**

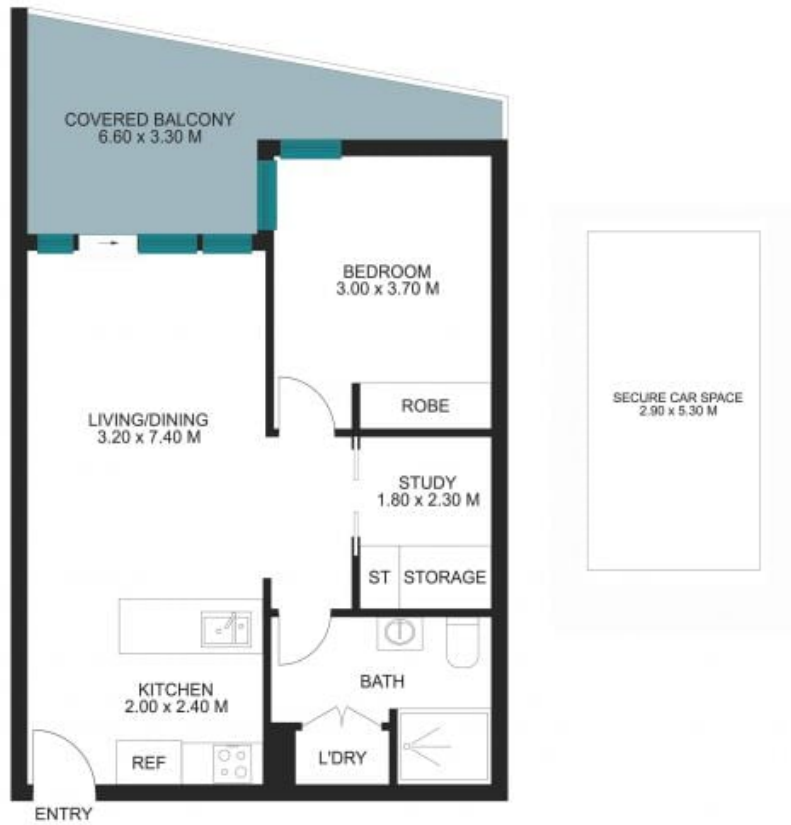
0404 649 188



**Cindy Xu**

0420 832 781

505/2 Chester Street  
Epping



The site plan and floorplan are not to scale; measurements are indicative of metres. Bushes and trees are placed for illustration purposes. Plans should not be relied on. Interested parties should make and rely on their own enquiries. Other information provided has been collected by reliable sources but cannot be guaranteed for accuracy.