

411/20 Epping Park Drive Epping, NSW



Spacious, Bright and Private Apartment with Triple facing

Enjoy modern living in the highly sought-after Epping Park community. This exceptionally spacious apartment features the classic in Epping Park, offering excellent privacy between bedrooms, natural light throughout, and private balcony perfect for relaxing or entertaining.



Juliet (Jiangmin) Chen

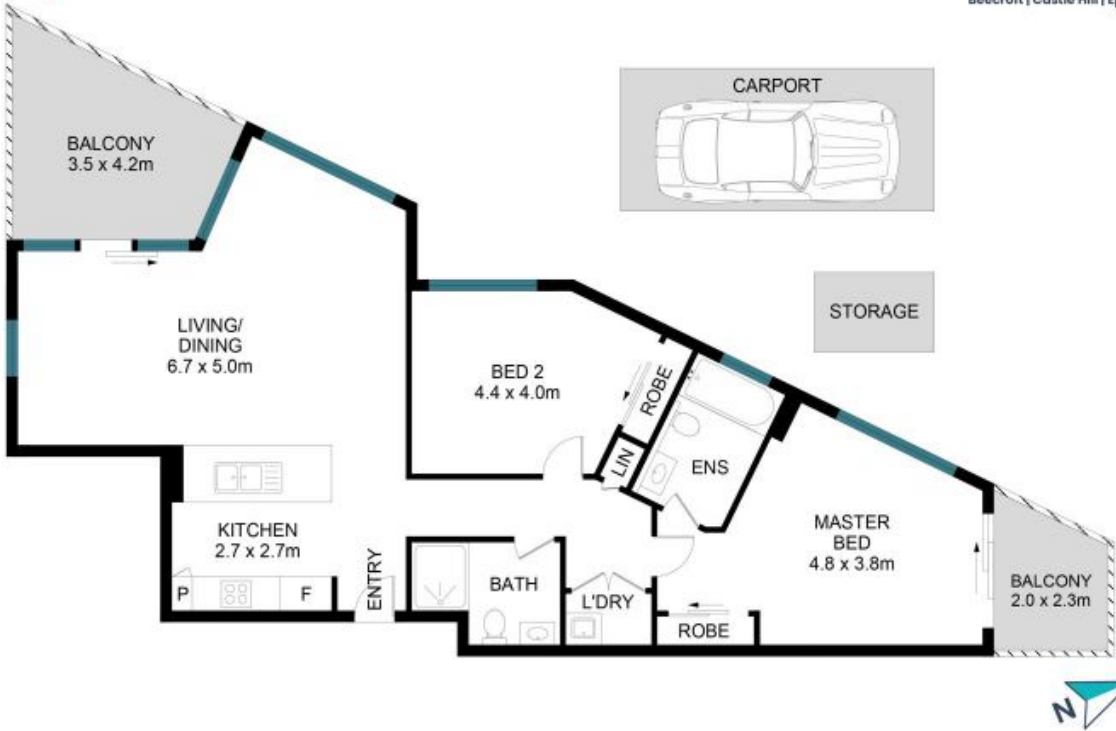
0408 997 997



Mary Song

0470 227 775

411/20 Epping Park Drive
Epping



The site plan and floorplan are not to scale; measurements are indicative of metres. Bushes and trees are placed for illustration purposes. Plans should not be relied on. Interested parties should make and rely on their own enquiries. Other information provided has been collected by reliable sources but cannot be guaranteed for accuracy.